



CM8828

Xear Audio Center

C-Media High Definition Audio Device

User Manual

Rev. 1.1

Oct. 29, 2012

Revision History

Revision	Date	Description	Edit by
1.0	2012/10/11	First released.	Anise Yang
1.1	2012/10/29	1. Update Xear 3D EX	Anise Yang


Table of Contents

Revision History.....	2
SECTION 1 Installing the CM8828 Software Package	6
1.1 Installation.....	6
1.2 Un-Installation.....	10
SECTION 2 Xear Audio Center Introduction.....	14
2.0 Open CM8828 High Definition Audio Device Software CPL	14
2.1 Xear Audio Center Function Introduction.....	18
2.1.1 Default Device selected	18
2.1.2 Master Volume / Mute & Un-Mute	20
2.1.3 Function Pop Menu	21
2.1.4 Xear 3D EX.....	22
2.1.5 Xear Pro (ASIO)	23
2.1.6 Function Page Area.....	24
2.1.7 Audio Status Panel	25
2.1.8 Profile Panel	27
2.2 Speaker-Output Device function page	28
2.2.1 Volume control Page	29
2.2.2 Speaker Settings Page	30
2.2.3 Sample Rate Page	31
2.2.4 Equalizer	31
2.2.5 Environment Effect	34
2.2.6 7.1 Virtual Speaker Shifter.....	35
2.2.7 Flex Bass II	37
2.2.8 Xear SingFX.....	39

2.2.9 Xear Surround Speaker	40
2.2.10 Xear Audio Brilliant.....	41
2.2.11 Xear Dynamic Bass.....	42
2.2.12 Xear Smart Volume	43
2.2.13 Xear Voice Clarity.....	44
2.2.14 Xear Surround Max.....	45
2.3 Headphone-Out Device function introduction	46
2.3.1 Volume control Page.....	47
2.3.2 Headphone Settings Page	48
2.3.3 Sample Rate Page	49
2.3.4 Equalizer	50
2.3.5 Environment Effect	52
2.3.6 Xear SingFX.....	53
2.3.7 7.1 Virtual Speaker Shifter.....	54
2.3.8 Xear Surround Headphone	56
2.3.9 Xear Audio Brilliant	57
2.3.10 Xear Dynamic Bass.....	58
2.3.11 Xear Smart Volume	59
2.2.12 Xear Voice Clarity.....	60
2.4 SPDIF-Out Device function introduction	61
2.4.1 Volume control Page.....	62
2.4.2 Sample Rate Page	63
2.5 Mic-in Device function introduction.....	64
2.5.1 Volume control Page.....	65
2.5.2 Sample Rate Page	66
2.5.3 Xear SingFX Page	67

2.5.4 Microphone Boost Page	68
2.5.5 Noise Reduction Page	69
2.6 Line-In Device function introduction.....	70
2.6.1 Volume control Page	70
2.6.2 Sample Rate Page	71
2.7 SPDIF-In Device function introduction	72
2.7.1 Volume control Page	72
2.7.2 Sample Rate Page	73
2.8 Stereo Mix Device function introduction	74
2.8.1 Volume control Page	74
2.8.2 Sample Rate Page	75
2.9 Information Page Introduction	76
2.10 Tray Icon Function Introduction	77
Appendix A - Multi-Lingual Supporting List	82

SECTION 1 Installing the CM8828 Software Package

 **Notice:**

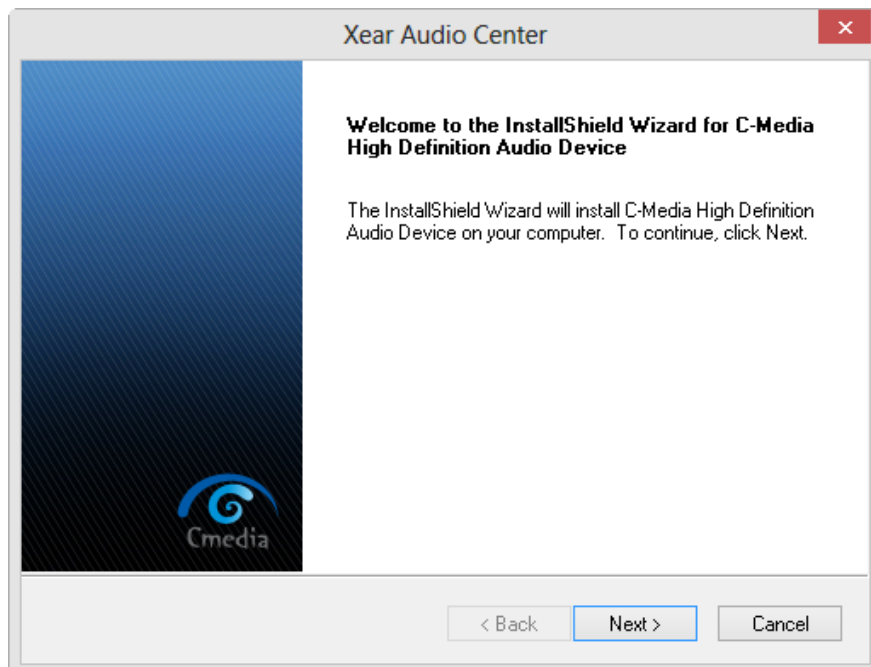
Ensure that you have plug-in the PCI-E audio card before installing CM8828 C-Media High Definition Audio Device driver. Otherwise, driver installation error may occur.

Before installing/Uninstalling, you should close all audio programs to avoid the driver installation failed.

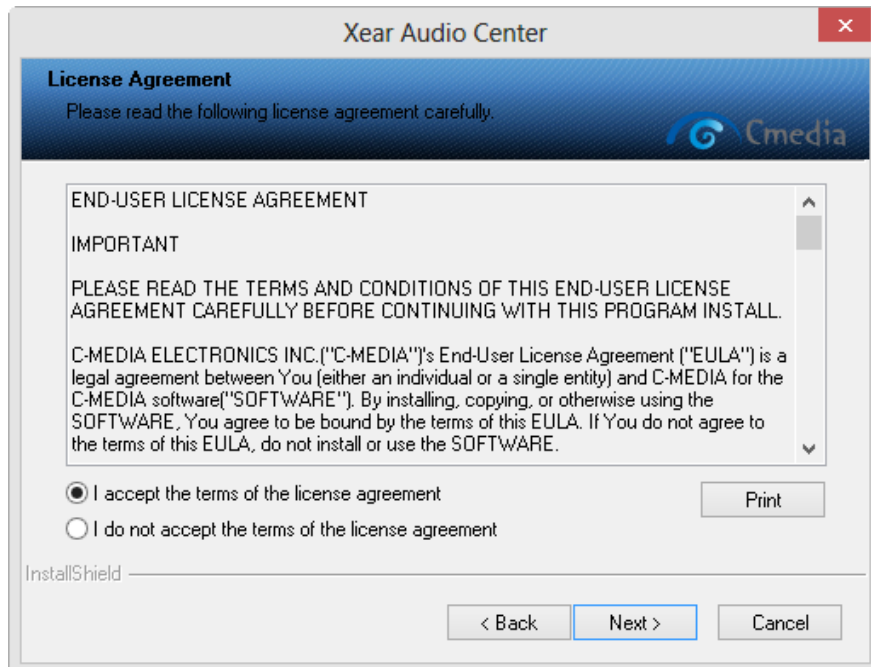
- ❖ Insert CM8828 C-Media High Definition Audio Device driver CD. Double click the setup.exe file, if auto run is disabled. Press “Cancel” if you want to quit installation.

1.1 Installation

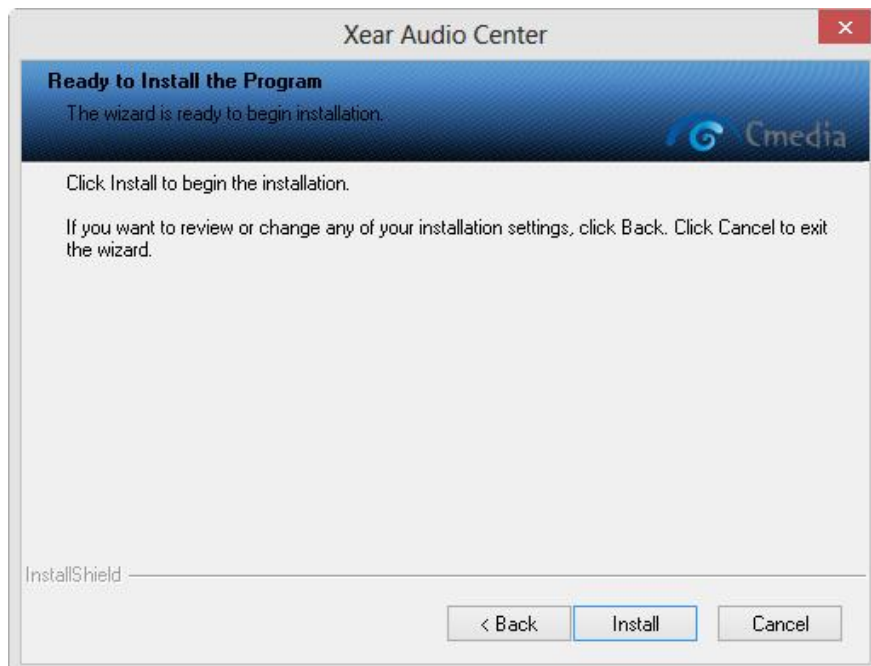
- ❖ Start Driver installing, you can see a welcome window, please press “Next” button to next step, press “Cancel” if you want to quit installation as following diagram.



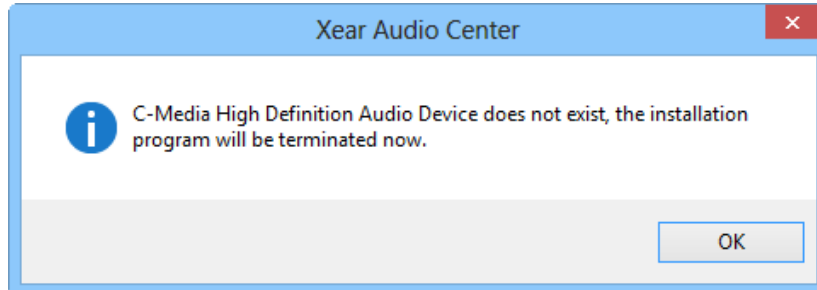
- ❖ License Agreement, please choose “I accept the terms of the license agreement” and then click on “Next” button.



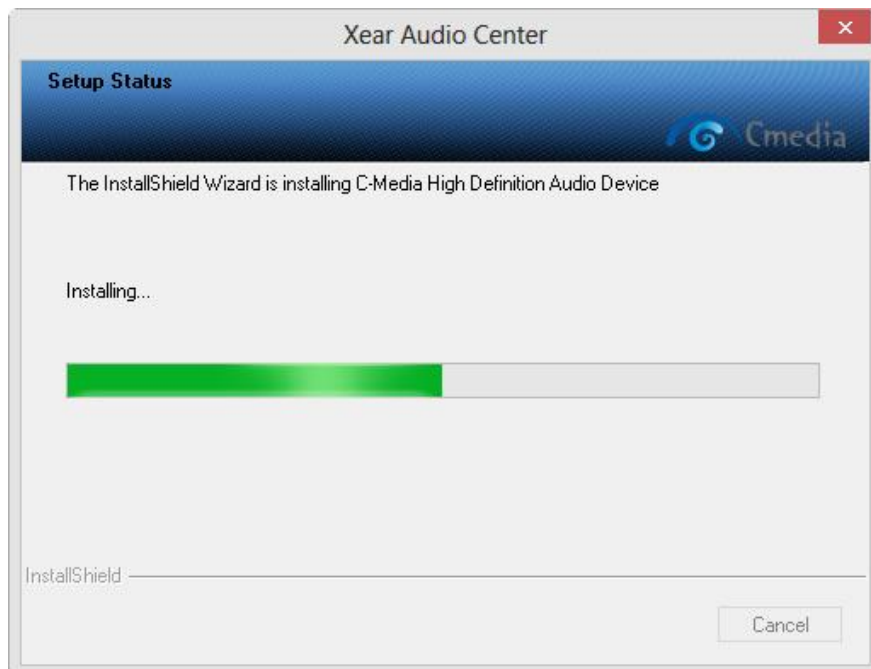
- ❖ Click on the “Install” button to start installing.



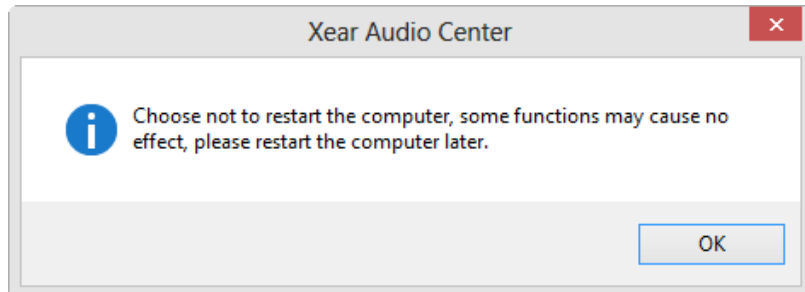
- ❖ If you see a dialog as below, please press “OK” and then shut-down your PC, and check your CM8828 C-Media High Definition Audio Device was plug-in property or not.



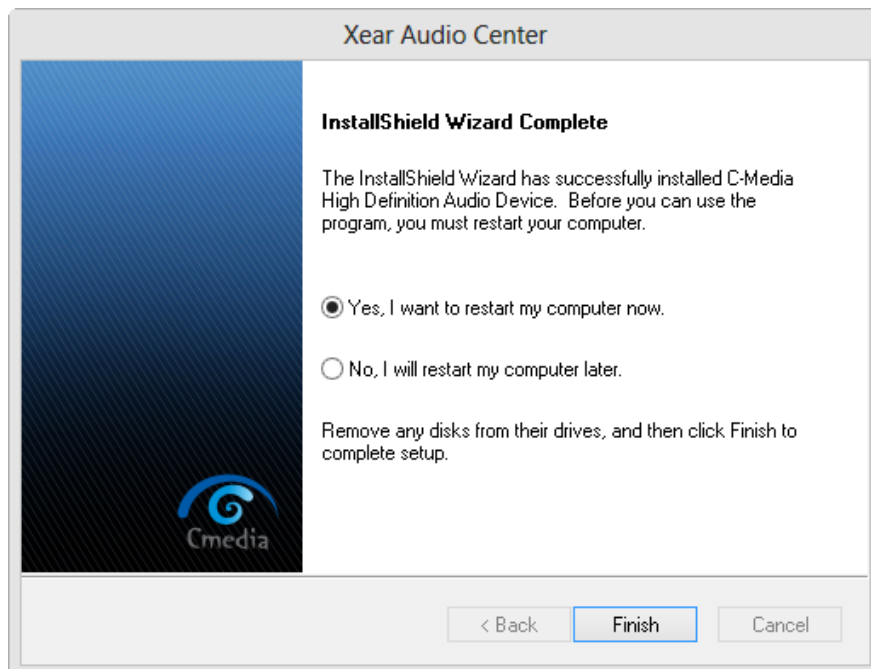
- ❖ Start to copy necessary files and install driver and CPL.



- ❖ Before go to the restart confirmation window, there is a message box to advise customer that they need to restart PC to make the function be effective.

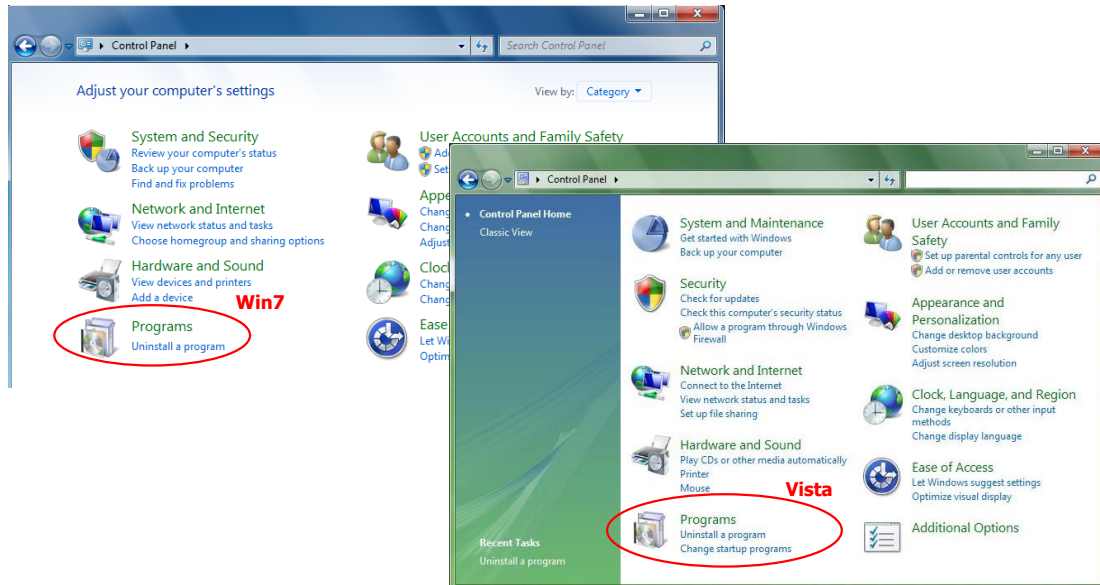


- ❖ Restart confirmation and click finish button to complete installing.

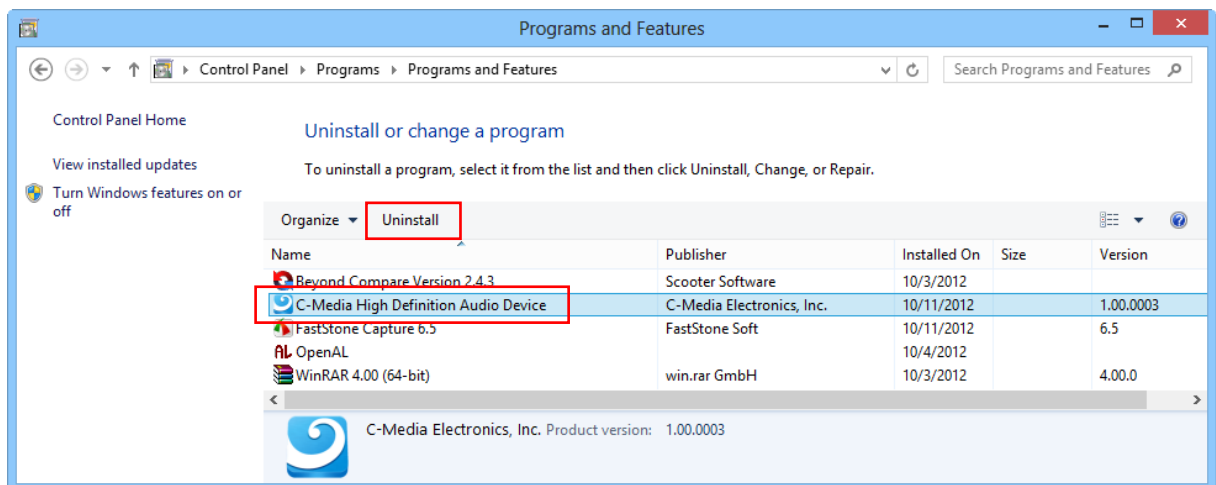


1.2 Un-Installation

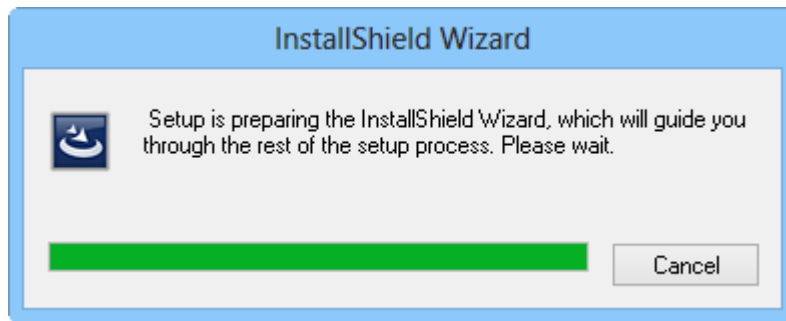
- ❖ Double click the “Programs/Uninstall a program” item from Windows Control Panel.



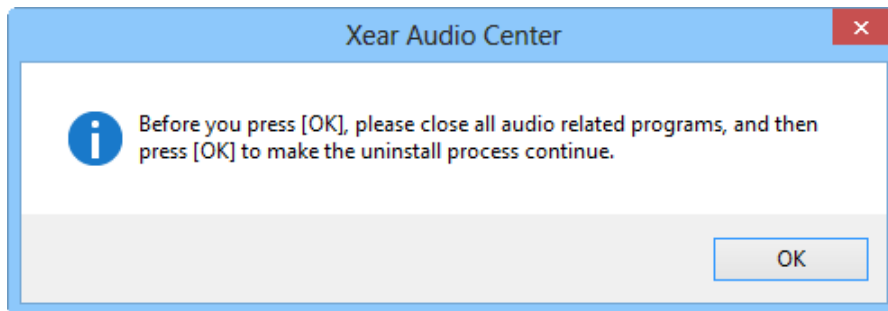
- ❖ Select “C-Media High Definition Audio Device” item, and then click “Uninstall” button.
Win7/Vista



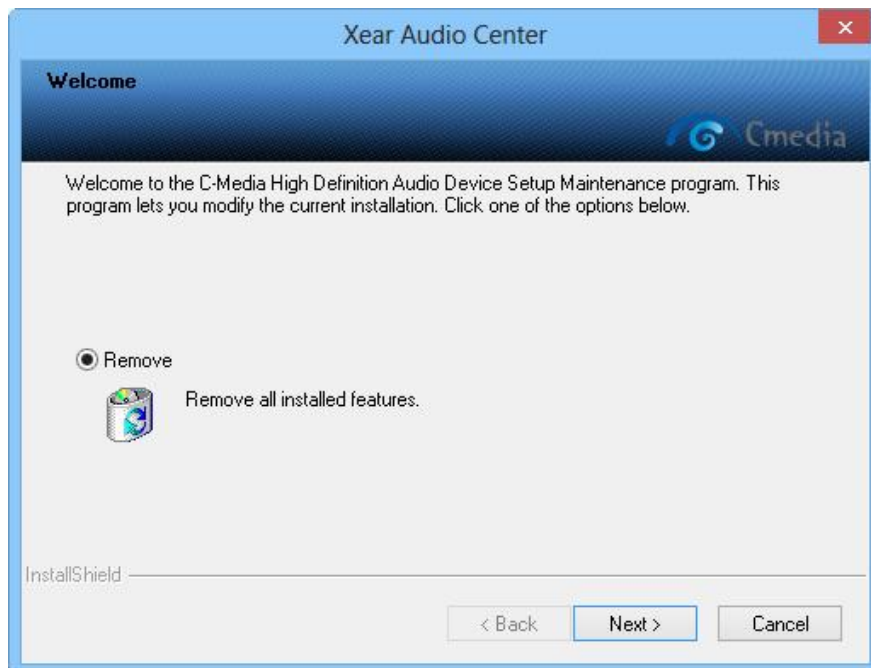
- ❖ Start uninstalling process.



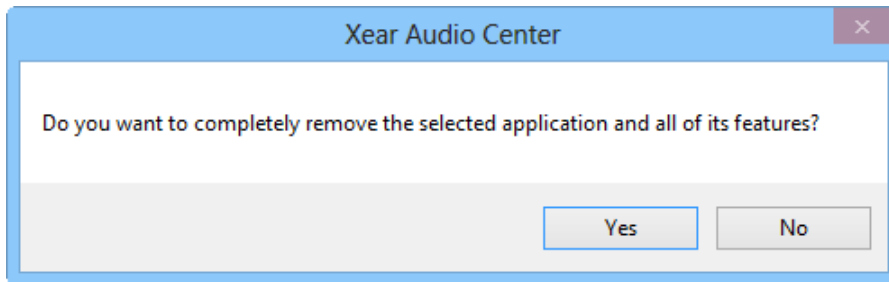
- ❖ Before Uninstalling, you should close all audio programs to avoid the driver installation failed.



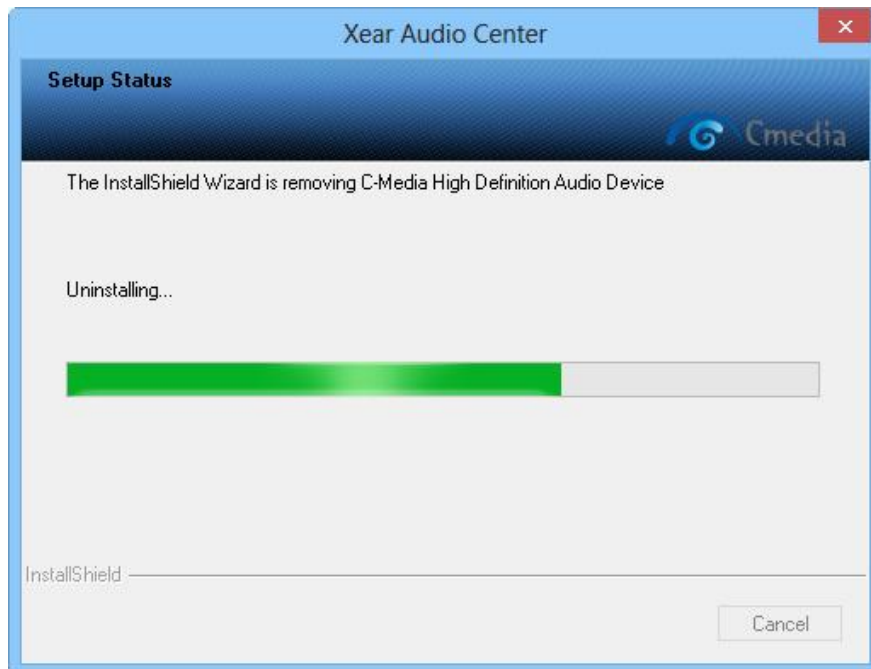
- ❖ Click "Next" button to start remove...



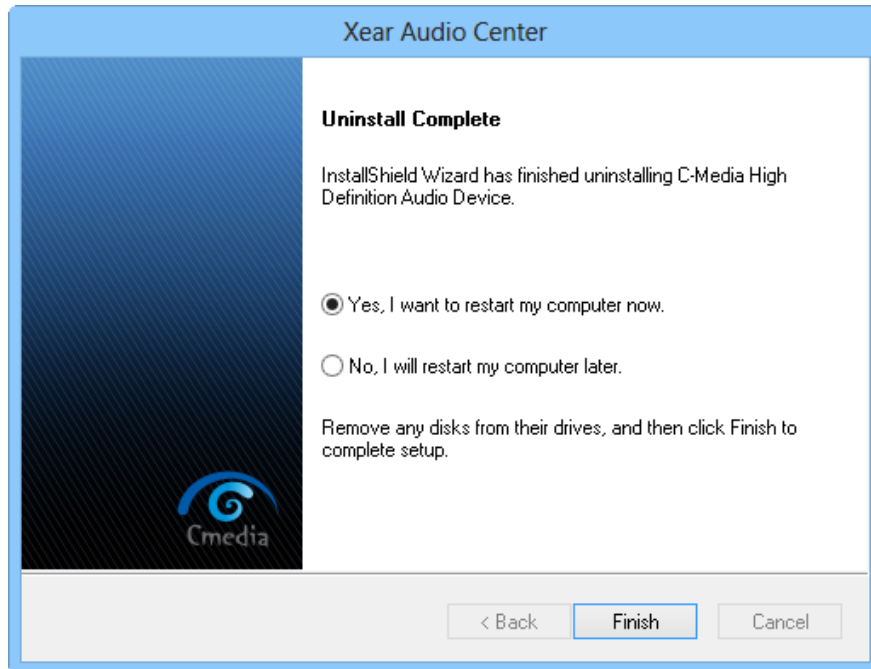
❖ Double confirmation



❖ Starting remove...



- ❖ Uninstall driver successfully, it is recommend restarting your computer to completely remove driver.



SECTION 2 Xear Audio Center Introduction

2.0 Open CM8828 High Definition Audio Device Software CPL

After the driver installing and rebooting, you will find the 8828 C-Media High Definition Audio Device CPL (Xear Audio Center) icon on the system tray bar.

- ❖ You are able to open the CPL by double-clicking on the icon as following diagram.

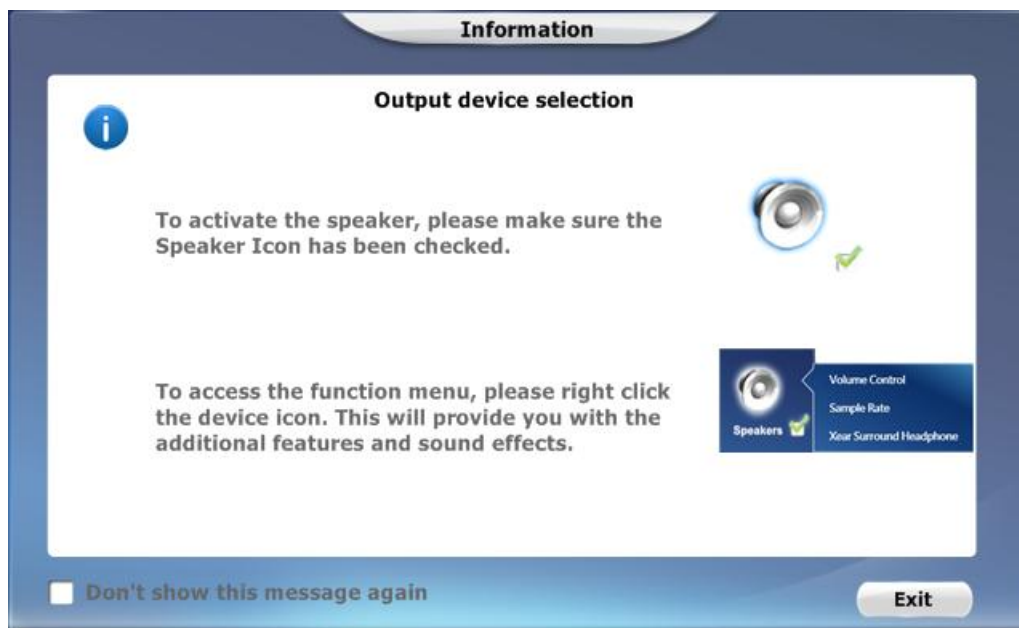
Win7/Vista Tray Icon



XP Tray Icon



- ❖ When you open the Xear Audio Center firstly, you can see a message as below, you can get the information about how getting start to use Xear Audio Center.



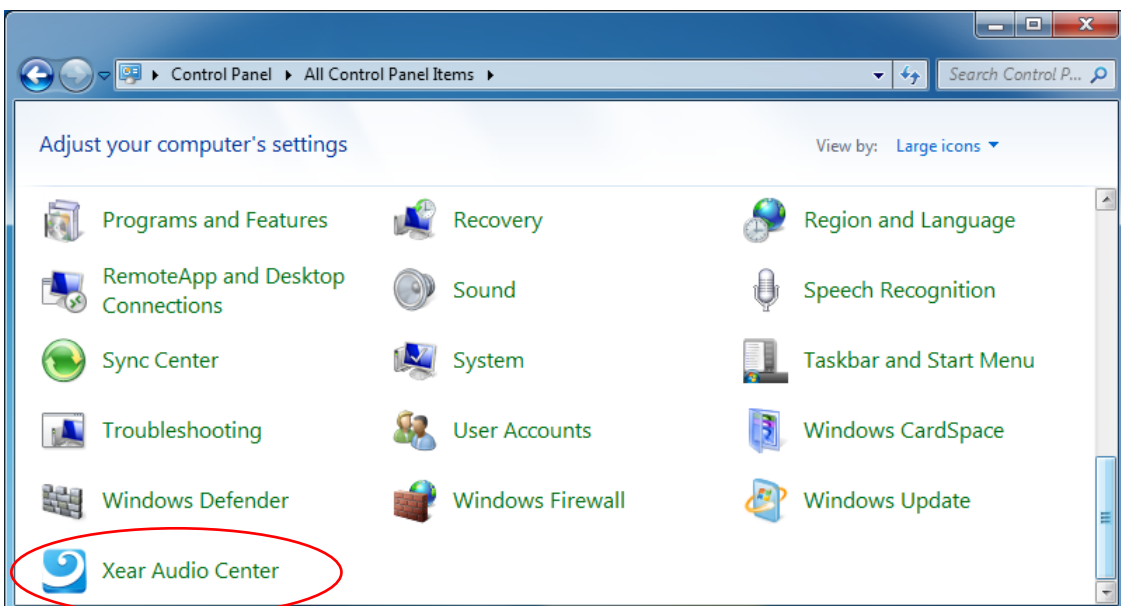
If you don't want to see this window next time, you can click on the "Don't show this message again" option.

❖ The “Xear Audio Center” will appear as below diagram.

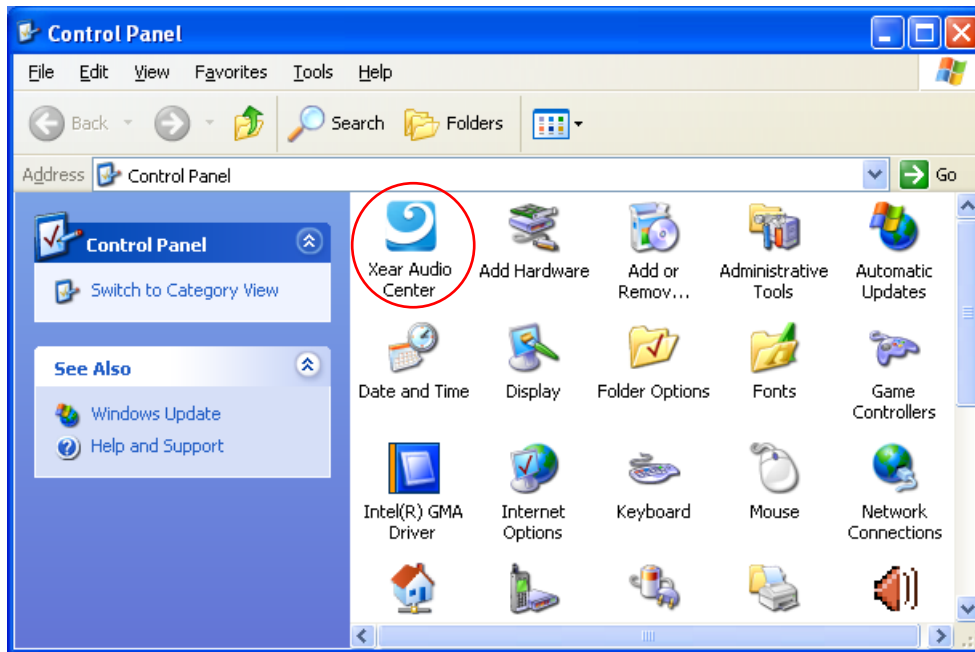


❖ If the tray icon does not appear in your system tray, please go to the Windows control panel and double click the “Xear Audio Center” CPL icon to open it.

Win7 / Vista



Windows XP



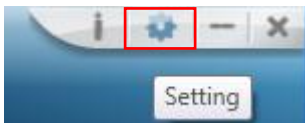
- ❖ How to make CPL icon visible in the system tray?



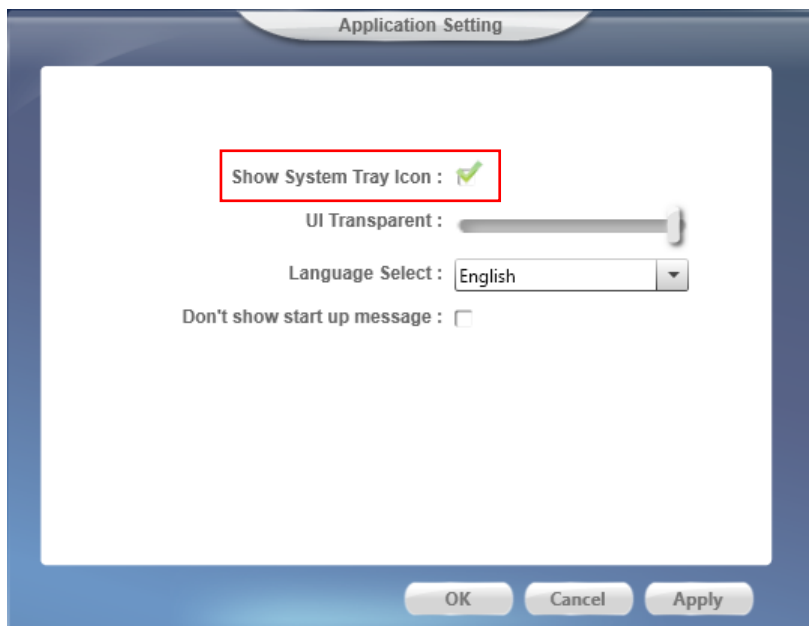
1. Open Xear Audio Center



2. Click on the "Setting" button to open setting window.



3. Check "Show System Tray Icon", the Xear Audio Center icon will show in the system tray.



2.1 Xear Audio Center Function Introduction

You can control C-Media High Definition Audio Device's addition feature and sound effects by Xear Audio Center as below.


2.1.1 Default Device selected


Before the Audio device playback or recording operation starting, it needs to select a device for the default device. Windows OS will assign the system resource to the default device.



■ Set as Default Output Device (Speaker)


To mouse over on the "Speakers" device (), and clicking mouse

left on the **check box** () or the **speaker device icon** to set the

default device in “Speakers” ().

■ Set as Default Input Device (Mic)

To mouse over on the “Mic” device () , and click on the **check**

box () or **Mic device icon** to set the default device in “Mic”

() .

■ Function Behavior

- There will be one and only one **audio output device** (Speaker or SPDIF-Out) set as the default audio output device for a specific role in windows 7 and Vista.
- There will be one and only one **audio Input device** (Mic-in, Line-in, SPDIF-In or Stereo Mix) set as the default audio input device for a specific role in windows 7 and Vista.

2.1.2 Master Volume / Mute & Un-Mute





■ Master Volume Adjusting

You can increase or decrease volume of **all output device** (Speaker, Headphone and SPDIF-Out etc.) by this mater volume bar



■ Mute/ Un-Mute Function

You can mute/un-mute volume of **all output device** (Speaker, Headphone and

SPDIF-Out etc.) by this mute () / Un-mute button ().

2.1.3 Function Pop Menu

Xear Audio Center provides several sound effects, there is a pop menu for each output/input device and you can entry into the sound effect page to enjoy your music, movie and gaming.

How to open pop menu:

- I. Double click left mouse on Device Icon.
- II. One click left mouse button on Device Icon.



2.1.4 Xear 3D EX



❖ Function Introduction

1. C-Media Xear3D EX technology provides a complete and fully backward compatible 3D audio interface for Windows Vista/Win7/Win8.
2. C-Media Xear3D EX technology restores the DirectSound3D hardware API under Windows Vista enabling all games designed for earlier versions of Windows to play full 3D positional audio.
3. The OpenAL Application Programming Interface (API) is also fully supported with C-Media Xear3D EX technology, which provides a transparent wrapper for all games that use this interface.

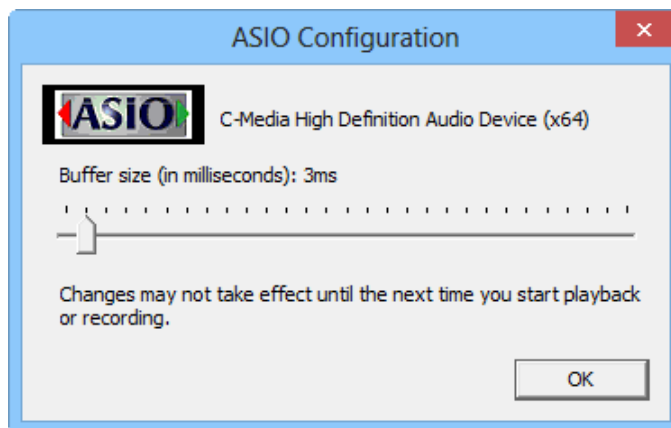
2.1.5 Xear Pro (ASIO)



❖ Function Introduction

Xear Pro (ASIO) providing a low-latency and high fidelity interface between a software application and a computer's sound card. (Recommend player: Foobar2000)

Xear Audio Center supports ASIO 2.2 control panel.



(ASIO is abbreviated from "Audio Stream Input Output"; Audio Stream Input / Output (ASIO) are a computer sound card driver protocol for digital audio specified by Steinberg.)

2.1.6 Function Page Area

When you click one of the function items in pop menu, it can entry into a function page as below area as below.

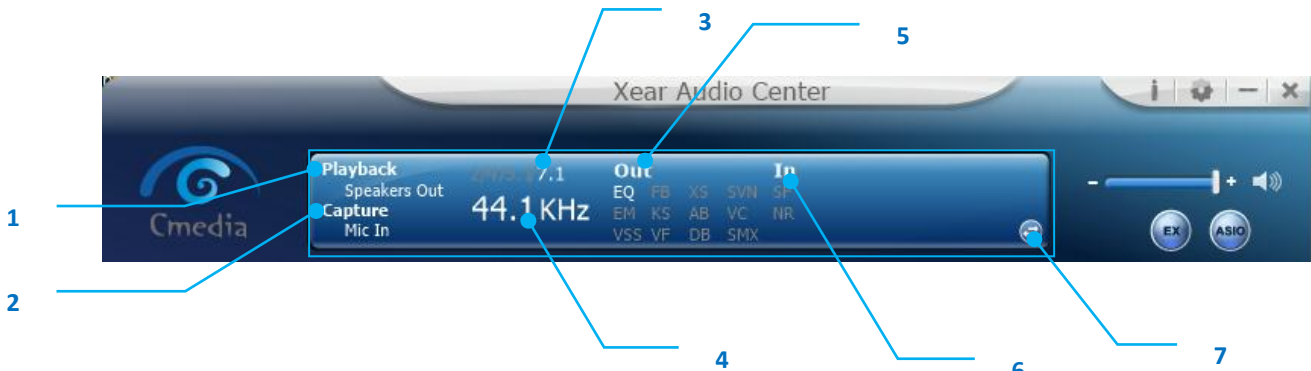
Choose the Equalizer Page



Entry into Equalizer Function Page



2.1.7 Audio Status Panel



1. Playback (Speakers Out)

It indicates the output default device.

2. Capture (Mic In)

It indicates the input default device.

3. Speaker Numbers (2/4/5.1/7.1)

It indicates the speaker numbers for Speaker device only.

4. Sample Rate

It indicates the Playback sample rate for default output device.

5. Audio Output effect indicator

It indicates the playback sound effect status.

Abbreviation	Sound effect
EQ	Equalizer
EM	Environment Effects
VSS	7.1 Virtual Speaker Shifter
FB	Flex Bass II
KS	Xear SingFX → Key Shifting
VF	Xear SingFX → Vocal Fading
AB	Xear Audio Brilliant
DB	Xear Dynamic Bass
SVN	Xear Smart Volume
VC	Xear Voice Clarity
SMX	Xear Surround Max

6. In effect indicator

It indicates the playback sound effect status.

Abbreviation	Sound effect
SF	Xear SingFX → Microphone Echo
SF	Xear SingFX → Magic Voice
NR	Noise Reduction

7. Switch to Profile Panel button

Click on this button will switch status bar to Profile panel. (Refer to [2.1.8 Profile Panel](#))

2.1.8 Profile Panel

This is the profile for sound effect setting; it has the preset mode and user define mode, the user define mode can be customizing.



1. Profile Mode:

You can set the preset profile mode by these profile buttons. When the preset mode is active, there is a Green-check symbol showing on the right-down corner.

2. Add Profile:

You can adjust specific sound effects (Ex: EQ, EM etc...) settings and click this "+" add profile button to name and create a user-define mode.


3. Delete Profile:

You can click this "-" button to delete the user-define mode.

4. Switch Button:

This switches the Profile panel to Audio Status Panel.

2.2 Speaker-Output Device function page

To Access function menu, please right click  the Speaker-Output device icon, this will provide you with the additional feature and sound effects.



2.2.1 Volume control Page



❖ Function Introduction

This function page provides a volume control for Speaker device.

1. **Volume control bar:**
Master – It can adjust volume level for all channels.
Front - It can adjust volume level for front channel.
2. **Left/ Right Channel Lock (Front, Cen/LFE, Rear, Side):**
 Clicking on the lock/ un-lock button, it can lock left-channel and right-channel to sync L/R channel.
3. **Mute / Un-mute:**
 Clicking on the mute/ un-mute button, it can mute all channels.
4. **dB Input Area (Front, Cen/LFE, Rear, Side):**
 You can directly fill-in a dB value into this text box to set the volume level.

2.2.2 Speaker Settings Page



❖ Function Introduction

You can set the speaker numbers (Stereo/ Quadraphonic /5.1 Surround /7.1 Surround) in this page.

1. **LFE/Center Channel Swap** -- When this item enable, it can swap the audio stream between Center/LFE.
2. **Speaker Test** – Click the “Speaker Test” button, the CPL will auto play test sound in order.
Front-Left →Front-Right→Back-Left→Back-Right→Center→Bass

2.2.3 Sample Rate Page



❖ Function Introduction

This function page provides a sample rate setting for Speaker device.

1. Sample Rate button

44.1 KHz - set playback sample rate to 44.1K

48 KHz - set playback sample rate to 48K

88.2 KHz - set playback sample rate to 88.2K

96 KHz - set playback sample rate to 96K

192 KHz - set playback sample rate to 192K

2. Bit Depth button

16bit - set playback bit depth to 16bit

24bit - set playback bit depth to 24bit

2.2.4 Equalizer



❖ **Function Introduction**

It provides a 10-band EQ function; you will be able to adjust the EQ band by manual and create customize preset items or click on the preset EQ mode

1. EQ enable/disable switch

Click on this check box to enable/disable EQ

2. Preset mode


Select a pre-set mode for equalizer that is designed accordingly. There are 12 preset modes such as Bass, Treble, Live, Rock, Jazz, etc.


3. EQ band controller

You can change the gain setting for each band (30/ 60/ 120/ 250/ 500/ 1K/ 2K/ 4K/ 8K/ 16K)

4. Manual mode

You can change the gain value of each band and then give it a name to the “A.

Input Field” and then click “” to save your new setting into the “B. customization EQ list”.

Click “” to delete settings.



2.2.5 Environment Effect



❖ Function Introduction

It provides 28 special environment emulations; you can hear different sound reflection and reverberation.

1. Environment Effect enable/disable switch

Click on this check box to enable/disable Environment Effect.

2. Environment Effect mode

Click on an Environment effect button or drop the dropdown list to choose a Environment effect.

3. Zoom Size

You can change the “Room Size” to simulate a larger or smaller space.

2.2.6 7.1 Virtual Speaker Shifter



❖ Function Introduction

You can use this page to simulate the speaker direction and distance.

1. 7.1 Virtual speaker shifter enable/disable switch

Click on this check box to enable/disable 7.1 Virtual Speaker.

2. Auto Rotation Mode

The virtual speakers rotate clockwise or counterclockwise slowly.

3. Manually Rotation Mode

Use mouse to rotate the virtual speakers on the screen manually.

4. Manual Shifting (Free Moving Mode)

Use pointer and click-and-drag to move the location of individual virtual speakers.

5. Reset

Reset the location of virtual speakers / virtual listener to default.

6. Virtual Speaker (L/R/Ls/Rs/Lb/Rb/C/W)

Each virtual speaker virtualizes one channel of the 7.1 channel speakers in the real world.

7. Volume Control

Each virtual speaker virtualizes one channel of the 7.1 channel speakers in the real world.

8. Volume indicator

Indicate value for each channel.

2.2.7 Flex Bass II



❖ Function Introduction

You can use this function to increase/decrease the LFE strength. This function would cut the low frequency band (50~250Hz) of stereo music content (ex. Mp3, WMA, CD Audio) and transfer to subwoofer or each speaker.

1. Flex Bass II enable/disable switch

Click on this check box to enable/disable Flex Bass II.

2. Cut Off Frequency:

The cutting range of low frequency is from 50Hz to 250Hz.

3. Bass Level:

The bass level range is from -12 to 12dB.

4. Speaker Size (L/R/Ls/Rs/Lb/Rb/C/W)

Small Speaker w/o bass

When the speaker size is setting to small, you can hear the sound resonance more obvious and reverberation from subwoofer.

Large Speaker w/ bass:

When the speaker size is setting to large, you can hear the sound resonance more obvious and reverberation from itself.

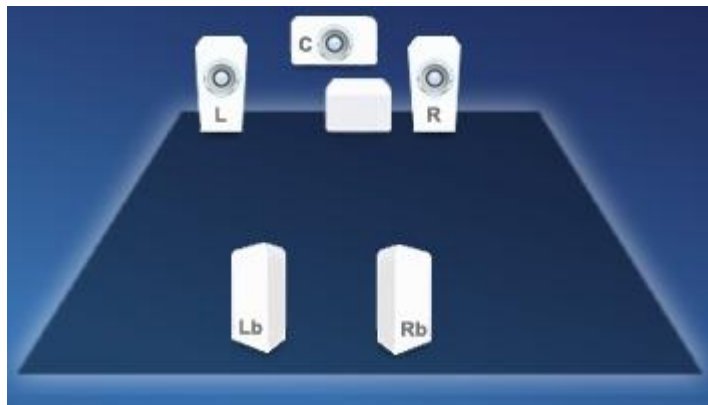
5. Speaker Diagram

You also can check the speaker size from this home theater diagram.

Small Speaker



Large Speaker



2.2.8 Xear SingFX



❖ Function Introduction

Xear SingFX page provides 2 feature for karaoke application.

1. Key Shifting switch

It provides the key change function, there are shifting-up 4 steps and shifting-down 4 steps, you can use slider bar to change the key level.

2. Vocal Fading

It provides the vocal removing function for any stereo music content (ex. Mp3、WMA、CD), you can use slider bar to change the vocal fading level.

2.2.9 Xear Surround Speaker



❖ Function Introduction

You can use this function to simulate a multi-speaker home theater surround listening experience by 2 channel (Stereo) Speaker device.

1. Enable Xear Surround

Click this check box to enable the Xear Surround sound effect.

2. Sound Filed Expansion / Speaker Angle

Xear Surround Speaker provide the Sound Filed Expansion and Speaker Angle For user fine tune and it can improve the listening experience

2.2.10 Xear Audio Brilliant



❖ Function Introduction

Xear Audio Brilliant can restore the clarity and details of compressed audio in music, movies and games (MP3, WMA, AAC, AC3, etc.).

1. Enable Audio Brilliant

Click this check box to enable the Xear Audio Brilliant.

2. Brilliant Level

You can increase/decrease the Brilliant Level.

3. Reset

Return to default value.

2.2.11 Xear Dynamic Bass



❖ Function Introduction

Xear Dynamic Bass can increase the bass reproduction capability of small speaker drivers by applying psychoacoustic techniques.

1. Enable Dynamic Bass

Click this check box to enable the Xear Dynamic Bass effect.

2. Bass Level

You can increase/decrease the Bass Level.

3. Cut-Off Frequency

You can adjust the Cut-Off Frequency range, to make the bass effect more strong.

4. Reset

Return to default value.

2.2.12 Xear Smart Volume



❖ Function Introduction

Xear Smart Volume can normalize sound levels of music to reduce the frequencies required for volume adjustments on Televisions, Docking Speakers, PCs and other consumer products.

1. Enable Smart Volume

Click this check box to enable the Xear Smart Volume

2. Volume Level

You can set normalize sound level.

3. Mode

You can choose Music mode and Speech Mode for your needs.

2.2.13 Xear Voice Clarity



❖ Function Introduction

Xear Voice Clarity can increase clarity, intelligibility, and prominence of receiving voice in VOIP, game, music, or movies without suppressing or changing other audio.

1. Enable Voice Clarity

Click this check box to enable the Xear Voice Clarity effect.

2. Voice Clarity Level

You can increase the volume level to make the voice more clear.

3. Noise Suppression for communication

You can eliminate the background noise.

4. Reset

Return to default volume.

2.2.14 Xear Surround Max



❖ Function Introduction

Xear Surround Max can expand stereo audio content to each output channel. When you playing mp3 music file and enable this function, you can hear music from each speaker (8 speakers).

1. Enable Voice Clarity

Click this check box to enable the Xear Surround Max.

2.3 Headphone-Out Device function introduction

To Access function menu, please right click  the Headphone-Output device icon, this will provide you with the additional feature and sound effects.



2.3.1 Volume control Page



❖ Function Introduction

This function page provides a volume control for Headphone device.

1. **Volume control bar:**
Headphone - It can adjust volume level for Headphone device.
2. **Left/ Right Channel Lock :**
Clicking on the lock/ un-lock button, it can lock left-channel and right-channel to sync L/R channel.
3. **Mute / Un-mute:**
Clicking on the mute/ un-mute button, it can mute all channels.
4. **dB Input Area :**
You can directly fill-in a dB value into this text box to set the volume level.

2.3.2 Headphone Settings Page



❖ Function Introduction

You can play a test sound for headphone in this page.

1. **Headphone Test** – Click the “Headphone Test” button, the CPL will auto play test sound.

2.3.3 Sample Rate Page



❖ Function Introduction

This function page provides a sample rate setting for Headphone device.

1. Sample Rate button

44.1 KHz - set playback sample rate to 44.1K

48 KHz - set playback sample rate to 48K

88.2 KHz - set playback sample rate to 88.2K

96 KHz - set playback sample rate to 96K

192 KHz - set playback sample rate to 192K

2. Bit Depth button

16bit - set playback bit depth to 16bit

24bit - set playback bit depth to 24bit

2.3.4 Equalizer



❖ Function Introduction

It provides a 10-band EQ function; you will be able to adjust the EQ band by manual and create customized preset items or click on the preset EQ mode

1. EQ enable/disable switch

Click on this check box to enable/disable EQ

2. Preset mode


Select a pre-set mode for equalizer that is designed accordingly. There are 12 preset modes such as Bass, Treble, Live, Rock, Jazz, etc.


3. EQ band controller

You can change the gain setting for each band (30/ 60/ 120/ 250/ 500/ 1K/ 2K/ 4K/ 8K/ 16K)

4. Manual mode

You can change the gain value of each band and then give it a name to the “A.

Input Field” and then click “” to save your new setting into the “B. customization EQ list”.

Click “” to delete settings.



2.3.5 Environment Effect



❖ Function Introduction

It provides 28 special environment emulations; you can hear different sound reflection and reverberation.

1. Environment Effect enable/disable switch

Click on this check box to enable/disable Environment Effect.

2. Environment Effect mode

Click on an Environment effect button or drop the dropdown list to choose a Environment effect.

3. Zoom Size

You can change the “Room Size” to simulate a larger or smaller space.

2.3.6 Xear SingFX



❖ Function Introduction

Xear SingFX page provides 2 feature for karaoke application.

1. Key Shifting switch

It provides the key change function, there are shifting-up 4 steps and shifting-down 4 steps, you can use slider bar to change the key level.

2. Vocal Fading:

It provides the vocal removing function for any stereo music content (ex. Mp3、WMA、CD), you can use slider bar to change the vocal fading level.

2.3.7 7.1 Virtual Speaker Shifter



❖ Function Introduction

You can use this page to simulate the speaker direction and distance.

1. 7.1 Virtual speaker shifter enable/disable switch

Click on this check box to enable/disable 7.1 Virtual Speaker.

2. Auto Rotation Mode

The virtual speakers rotate clockwise or counterclockwise slowly.

3. Manually Rotation Mode

Use mouse to rotate the virtual speakers on the screen manually.

4. Manual Shifting (Free Moving Mode)

Use pointer and click-and-drag to move the location of individual virtual speakers.

5. Reset

Reset the location of virtual speakers / virtual listener to default.

6. Virtual Speaker (L/R/Ls/Rs/Lb/Rb/C/W)

Each virtual speaker virtualizes one channel of the 7.1 channel speakers in the real world.

7. Volume Control

Each virtual speaker virtualizes one channel of the 7.1 channel speakers in the real world.

8. Volume indicator

Indicate value for each channel.

2.3.8 Xear Surround Headphone



❖ Function Introduction

You can use this function to simulate a multi-speaker home theater surround listening experience by 2 channel (Stereo) Headphone device.

1. Enable Xear Surround

Click this check box to enable the Xear Surround sound effect.

2. Room Size

Xear Surround Headphone provides 3 room size modes and one anechoic room. You can change the “Room Size Button” to simulate the difference room size and room type.

2.3.9 Xear Audio Brilliant



❖ Function Introduction

Xear Audio Brilliant can restore the clarity and details of compressed audio in music, movies and games (MP3, WMA, AAC, AC3, etc.).

1. Enable Audio Brilliant

Click this check box to enable the Xear Audio Brilliant.

2. Brilliant Level

You can increase/decrease the Brilliant Level.

3. Reset

Return to default value.

2.3.10 Xear Dynamic Bass



❖ Function Introduction

Xear Dynamic Bass can increase the bass reproduction capability of small speaker drivers by applying psychoacoustic techniques.

1. Enable Dynamic Bass

Click this check box to enable the Xear Dynamic Bass effect.

2. Bass Level

You can increase/decrease the Bass Level.

3. Cut-Off Frequency

You can adjust the Cut-Off Frequency range, to make the bass effect more strong.

4. Reset

Return to default value.

2.3.11 Xear Smart Volume



❖ Function Introduction

Xear Smart Volume can normalize sound levels of music to reduce the frequencies required for volume adjustments on Televisions, Docking Speakers, PCs and other consumer products.

1. Enable Smart Volume

Click this check box to enable the Xear Smart Volume

2. Volume Level

You can set normalize sound level.

3. Mode

You can choose Music mode and Speech Mode for your needs.

2.2.12 Xear Voice Clarity



❖ Function Introduction

Xear Voice Clarity can increase clarity, intelligibility, and prominence of receiving voice in VOIP, game, music, or movies without suppressing or changing other audio.

1. Enable Voice Clarity

Click this check box to enable the Xear Voice Clarity effect.

2. Voice Clarity Level

You can increase the volume level to make the voice more clear.


3. Noise Suppression for communication

You can eliminate the background noise.

4. Reset

Return to default volume.

2.4 SPDIF-Out Device function introduction

To Access function menu, please right click  the SPDIF-Output device icon, this will provide you with the additional feature and sound effects.



2.4.1 Volume control Page



❖ Function Introduction

This function page provides a volume control for S/PDIF-Output device.

1. **Volume control bar:**
S/PDIF-Out - It can adjust volume level for S/PDIF-Out device.
2. **Left/ Right Channel Lock :**
Clicking on the lock/ un-lock button, it can lock left-channel and right-channel to sync L/R channel.
3. **Mute / Un-mute:**
Clicking on the mute/ un-mute button, it can mute S/PDIF output.
4. **dB Input Area :**
You can directly fill-in a dB value into this text box to set the volume level.

2.4.2 Sample Rate Page



❖ Function Introduction

This function page provides a sample rate setting for S/PDIF-Out device.

1. Sample Rate button

44.1 KHz - set playback sample rate to 44.1K

48 KHz - set playback sample rate to 48K

88.2 KHz - set playback sample rate to 88.2K

96 KHz - set playback sample rate to 96K


192 KHz - set playback sample rate to 192K

2. Bit Depth button

16bit - set playback bit depth to 16bit

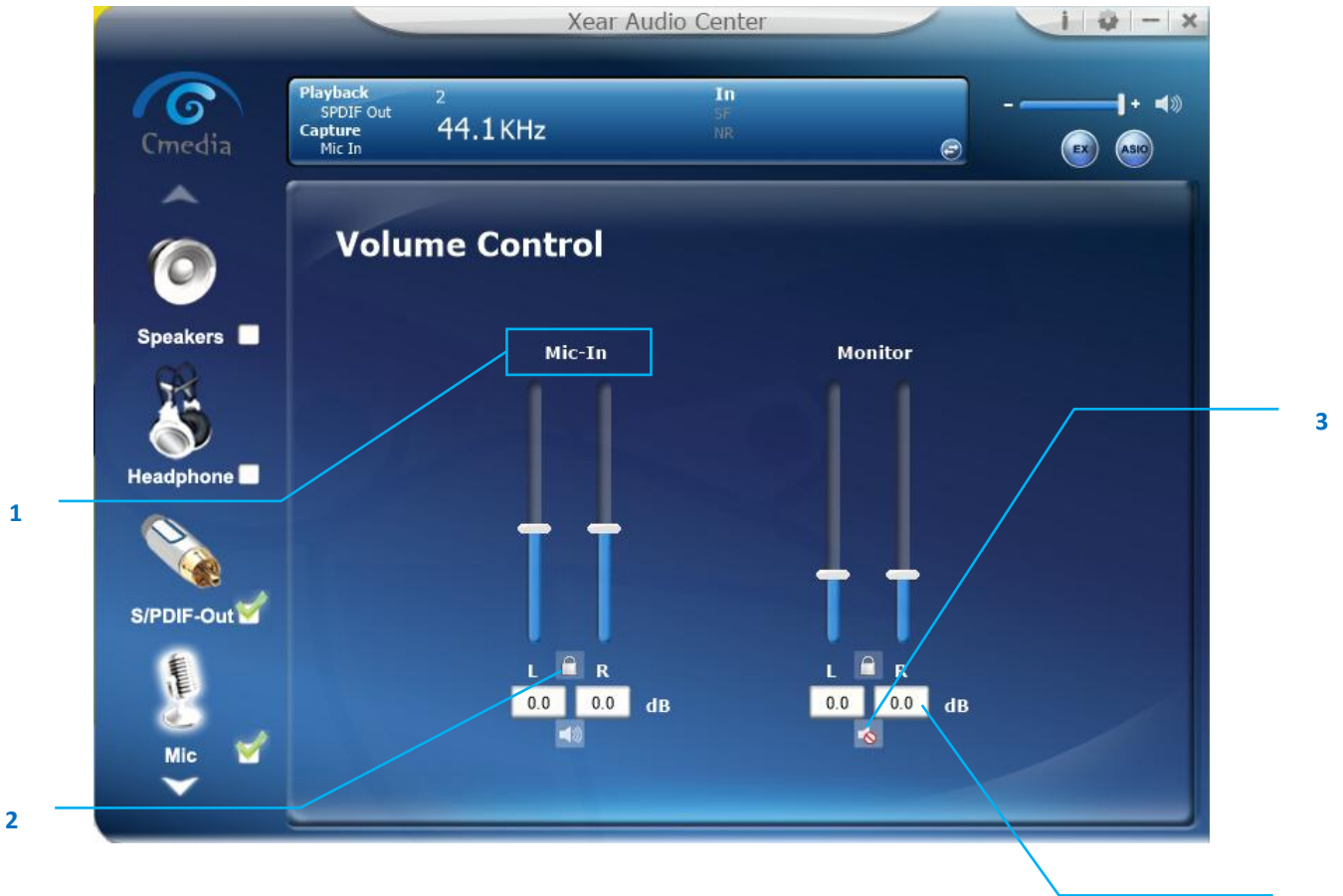
24bit - set playback bit depth to 24bit

2.5 Mic-in Device function introduction

To Access function menu, please right click  the Mic-In device icon, this will provide you with the additional feature and sound effects.



2.5.1 Volume control Page



❖ Function Introduction

This function page provides the recording volume and monitor volume control for Microphone device.(Same as Line-in device)

1. **Volume control bar:**
Mic-In – It can adjust volume level for recording.
Monitor- It can adjust volume level for Mic-in monitor.
2. **Left/ Right Channel Lock:**
 Clicking on the lock/ un-lock button, it can lock left-channel and right-channel.
3. **Mute / Un-mute:**
 Clicking on the mute/ un-mute button, it can mute all channels.
4. **dB Input Area**
 You can directly fill-in a dB value into this text box to set the volume level.

2.5.2 Sample Rate Page



❖ Function Introduction

This function page provides a sample rate setting for Microphone device.

1. Sample Rate button

44.1 K Hz - set recording sample rate to 44.1K

48 K Hz - set recording sample rate to 48K

88.2K Hz - set recording sample rate to 88.2K

96 K Hz - set recording sample rate to 96K

192 K Hz - set recording sample rate to 192K

2. Bit Depth button

16bit - set recording bit depth to 16bit

24bit - set recording bit depth to 24bit

2.5.3 Xear SingFX Page



❖ Function Introduction

When you are talking to your friends over the network like messenger, VOIP, online game applications, you can use “Magic Voice” effects to simulate some funny voice. Only one voice type can be chosen at one time.

1. Microphone Echo,

Click this check box to enable the Microphone echo effect; you can use the slider bar to change the echo level.

2. Magic Voice mode (Monster/Carton/Male/Female)

Click this check box to enable the Magic Voice effect; you can click on the any one button to set the magic voice mode.

2.5.4 Microphone Boost Page



❖ Function Introduction

You can increase the volume of the microphone recording.

1. Mic Boost slider bar

You can adjust the slider bar to change boost gain.

2.5.5 Noise Reduction Page



❖ Function Introduction

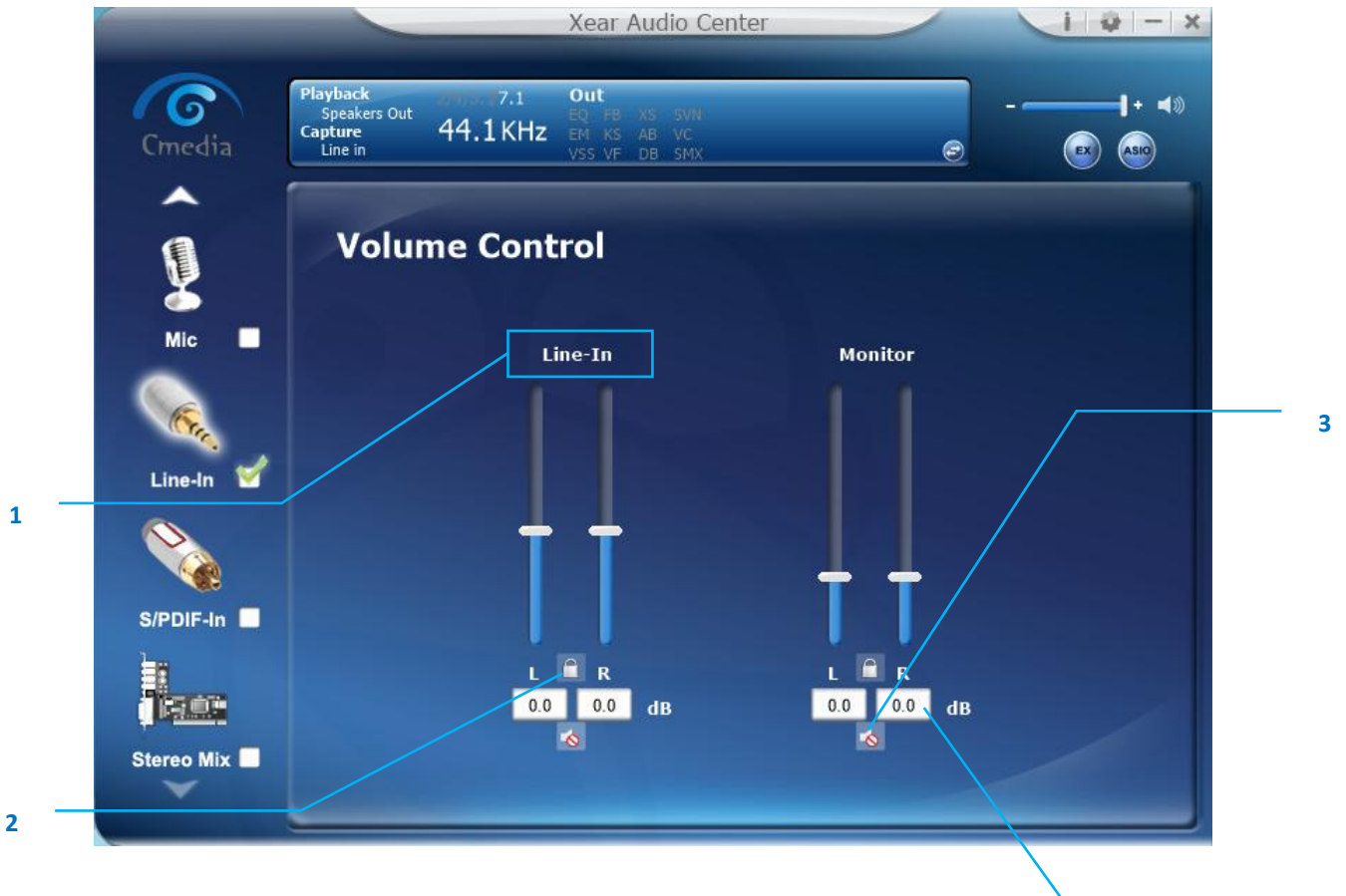
Noise Removal effect can be used to attenuate constant background noise such as electric fans or hums.

1. Enable Noise Reduction

You can click this check box to enable the Noise Reduction effect.

2.6 Line-In Device function introduction

2.6.1 Volume control Page



❖ Function Introduction

This function page provides the recording volume and monitor volume control for Line-in device.

1. Volume control bar:

Line-In – It can adjust volume level for recording.

Monitor- It can adjust volume level for Line-in monitor.

2. Left/ Right Channel Lock:

Clicking on the lock/ un-lock button, it can lock left-channel and right-channel.

3. Mute / Un-mute:

Clicking on the mute/ un-mute button, it can mute all channels.

4. dB Input Area

You can directly fill-in a dB value into this text box to set the volume level.

2.6.2 Sample Rate Page



❖ Function Introduction

This function page provides a sample rate setting for Line-in device.

1. Sample Rate button

44.1 K Hz - set recording sample rate to 44.1K

48 K Hz - set recording sample rate to 48K

88.2K Hz - set recording sample rate to 88.2K

96 K Hz - set recording sample rate to 96K

192 K Hz - set recording sample rate to 192K

2. Bit Depth button

16bit - set recording bit depth to 16bit

24bit - set recording bit depth to 24bit

2.7 SPDIF-In Device function introduction

2.7.1 Volume control Page



❖ Function Introduction

This function page provides the recording volume control for S/PDIF-in device.

1. **Volume control bar:**
Line-In – It can adjust volume level for recording.
2. **Left/ Right Channel Lock:**
 Clicking on the lock/ un-lock button, it can lock left-channel and right-channel.
3. **Mute / Un-mute:**
 Clicking on the mute/ un-mute button, it can mute all channels.
4. **dB Input Area**
 You can directly fill-in a dB value into this text box to set the volume level.

2.7.2 Sample Rate Page



❖ Function Introduction

This function page provides a sample rate setting for S/PDIF-in device.

1. Sample Rate button

44.1 K Hz - set recording sample rate to 44.1K

48 K Hz - set recording sample rate to 48K

88.2K Hz - set recording sample rate to 88.2K

96 K Hz - set recording sample rate to 96K

192 K Hz - set recording sample rate to 192K

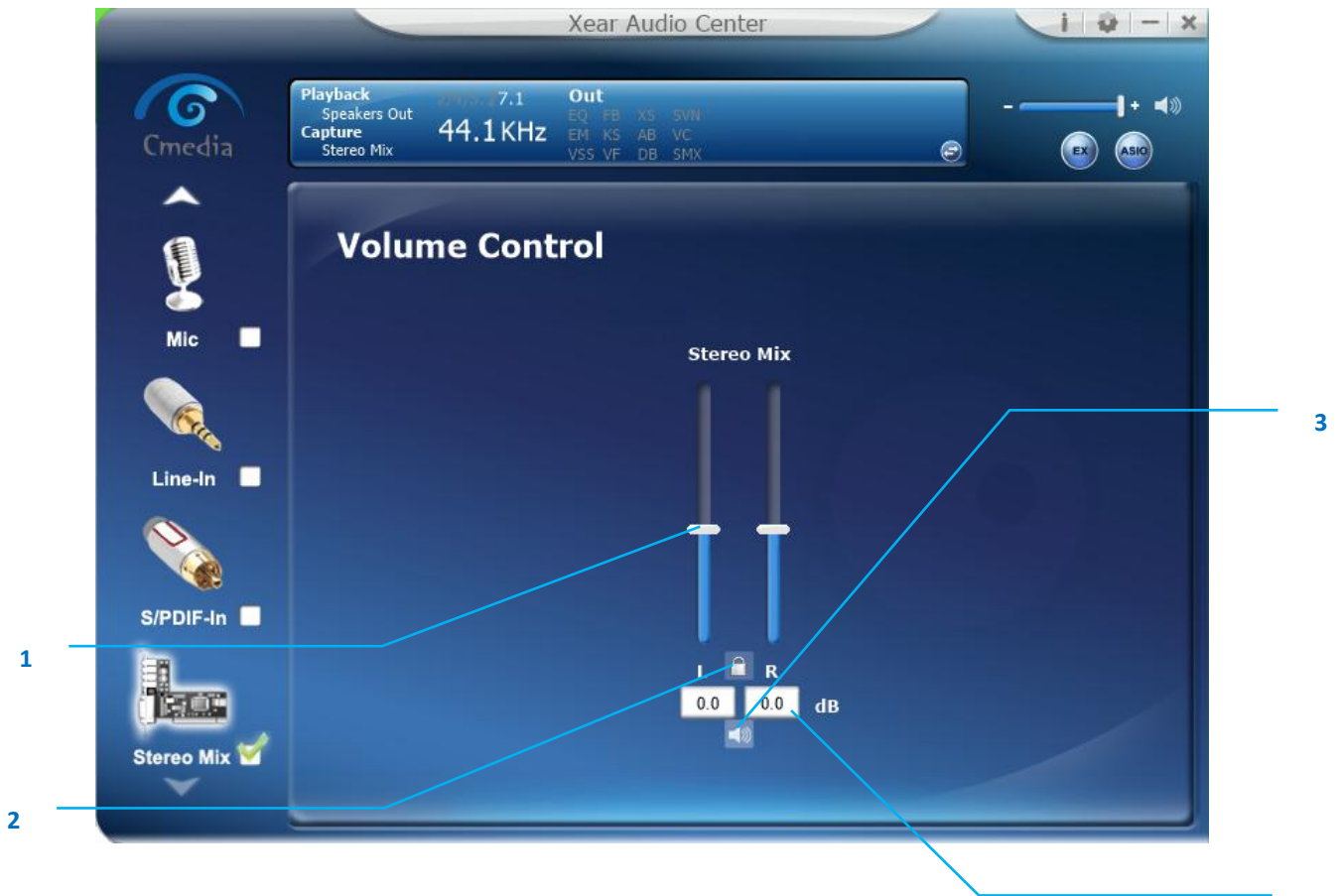
2. Bit Depth button

16bit - set recording bit depth to 16bit

24bit - set recording bit depth to 24bit

2.8 Stereo Mix Device function introduction

2.8.1 Volume control Page



❖ Function Introduction

This function page provides the recording volume control for Stereo Mix device.

1. **Volume control bar:**
Stereo Mix – It can adjust volume level for recording.
2. **Left/ Right Channel Lock:**
Clicking on the lock/ un-lock button, it can lock left-channel and right-channel.
3. **Mute / Un-mute:**
Clicking on the mute/ un-mute button, it can mute all channels.
4. **dB Input Area**
You can directly fill-in a dB value into this text box to set the volume level.

2.8.2 Sample Rate Page



❖ Function Introduction

This function page provides a sample rate setting for Stereo Mix device.

1. Sample Rate button

44.1 K Hz - set recording sample rate to 44.1K

48 K Hz - set recording sample rate to 48K

88.2K Hz - set recording sample rate to 88.2K

96 K Hz - set recording sample rate to 96K

192 K Hz - set recording sample rate to 192K

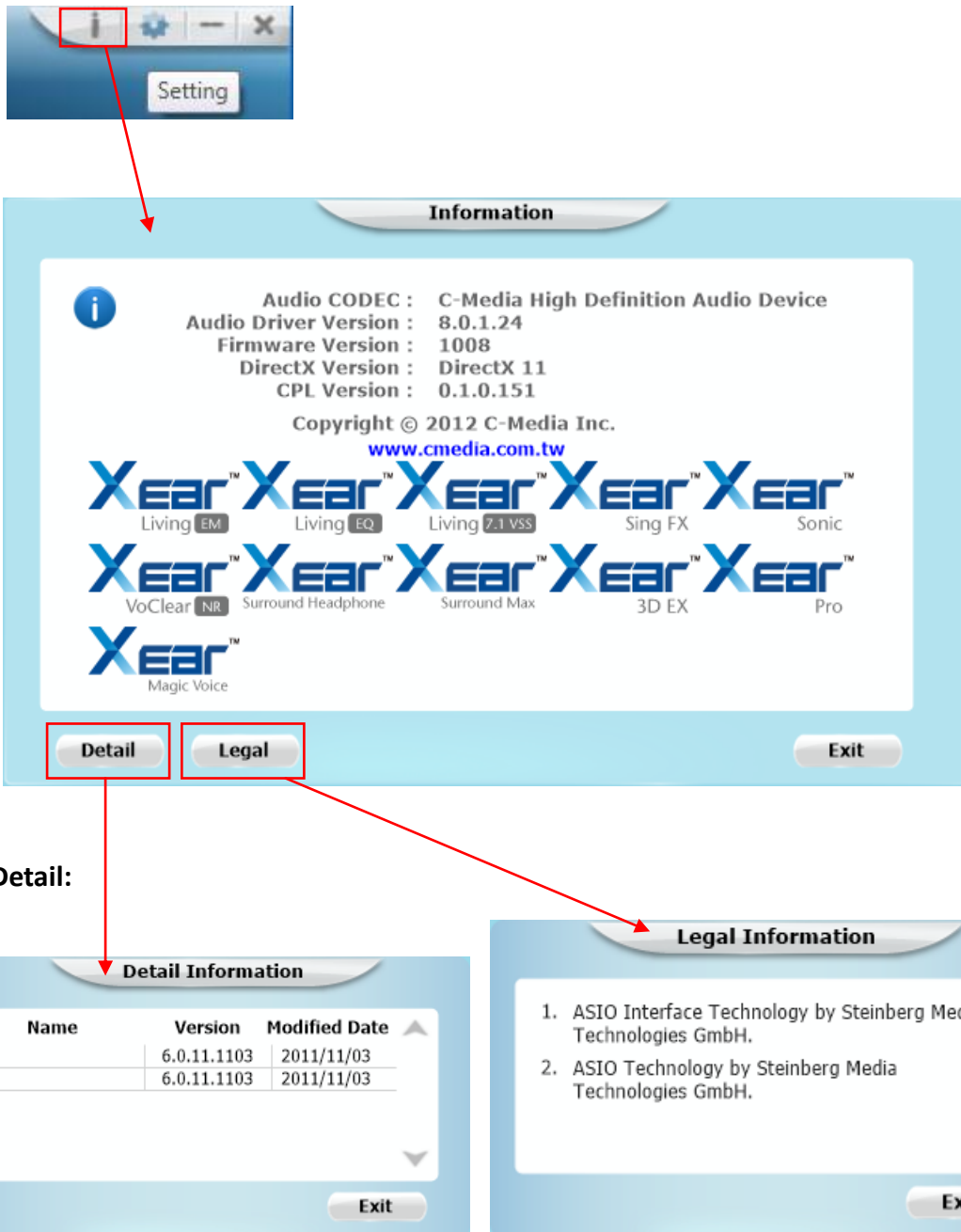
2. Bit Depth button

16bit - set recording bit depth to 16bit

24bit - set recording bit depth to 24bit


2.9 Information Page Introduction

This page lists the driver information and the technologies' trademark logo. You can get both hardware/software details and also legal information references here.













Setting


Information


Audio CODEC : C-Media High Definition Audio Device
Audio Driver Version : 8.0.1.24
Firmware Version : 1008
DirectX Version : DirectX 11
CPL Version : 0.1.0.151

Copyright © 2012 C-Media Inc.
www.cmedia.com.tw



Detail:

Detail Information

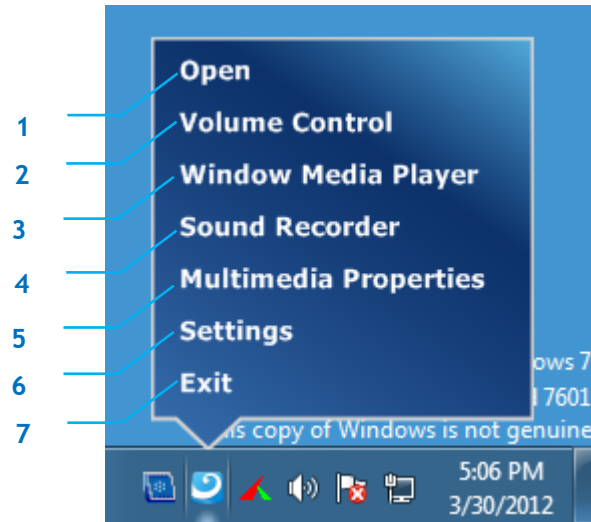
Name	Version	Modified Date	
GFX	6.0.11.1103	2011/11/03	▲
LFX	6.0.11.1103	2011/11/03	

Legal Information

1. ASIO Interface Technology by Steinberg Media Technologies GmbH.
2. ASIO Technology by Steinberg Media Technologies GmbH.

2.10 Tray Icon Function Introduction

Open the “CPL Tray Icon Function List” by right-clicking on the tray Icon on system tray.

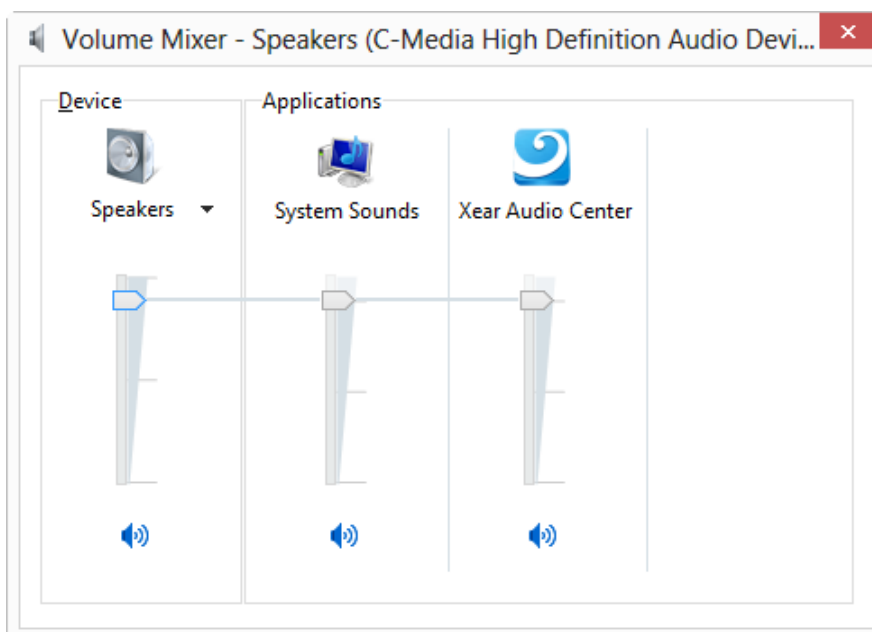


1. Open:

When click the “Open” item, will restore the Xear Audio Center.

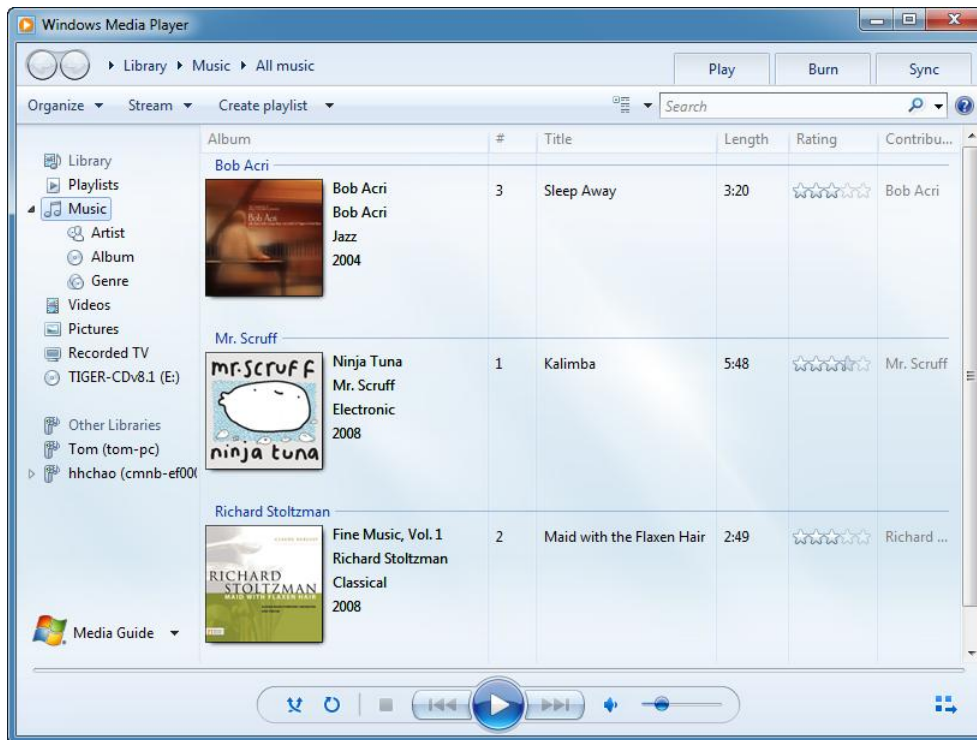
2. Volume Control:

When click the “Volume Control” item, will open the Volume Mixer of Windows OS, if you want to separately control the volume of your speakers and other sound devices or programs using this Volume Mixer.



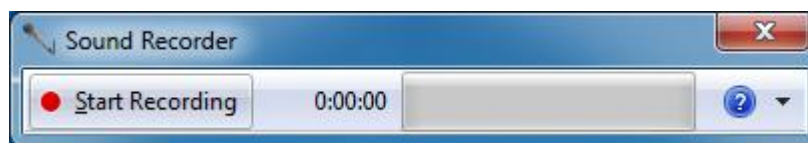
3. Windows Media Player:

When click the “Windows Media Player” item, will open the Microsoft Windows Media Player.



4. Sound Recorder:

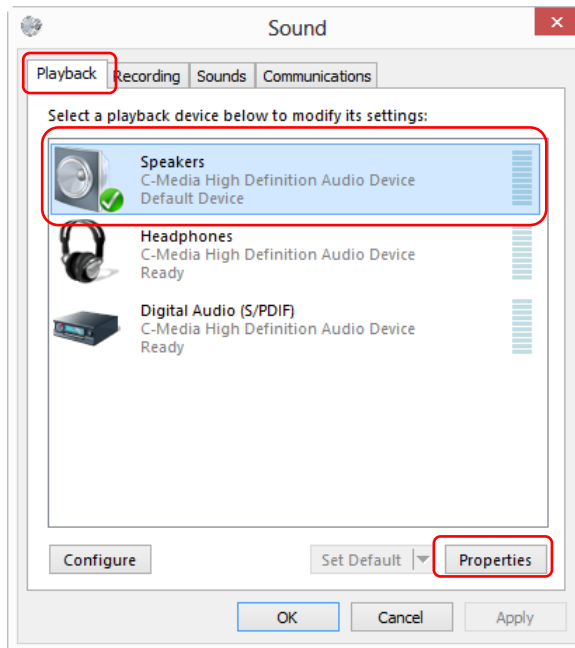
Click the “Sound Recorder” item to open the Windows Sound recorder.



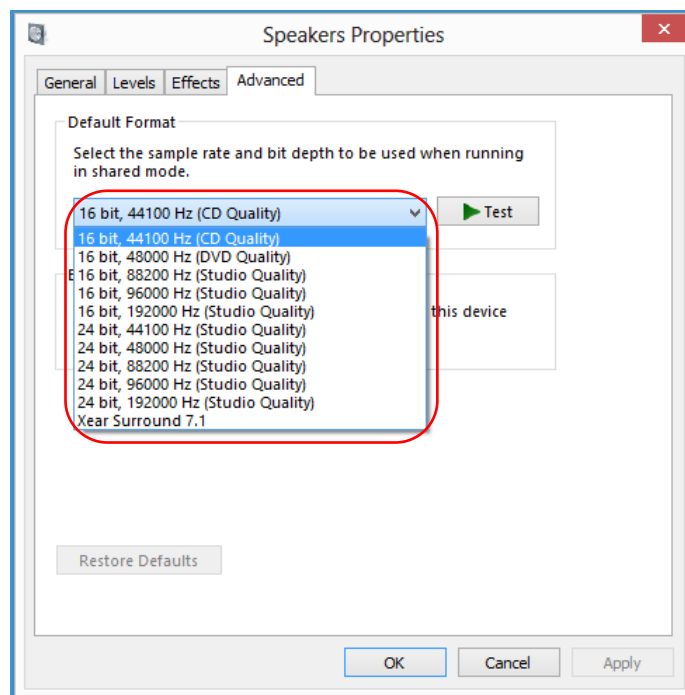
5. Multimedia Properties:

Open the multimedia properties page of Windows OS, you can select the working sample rate & bit rate on the property page.

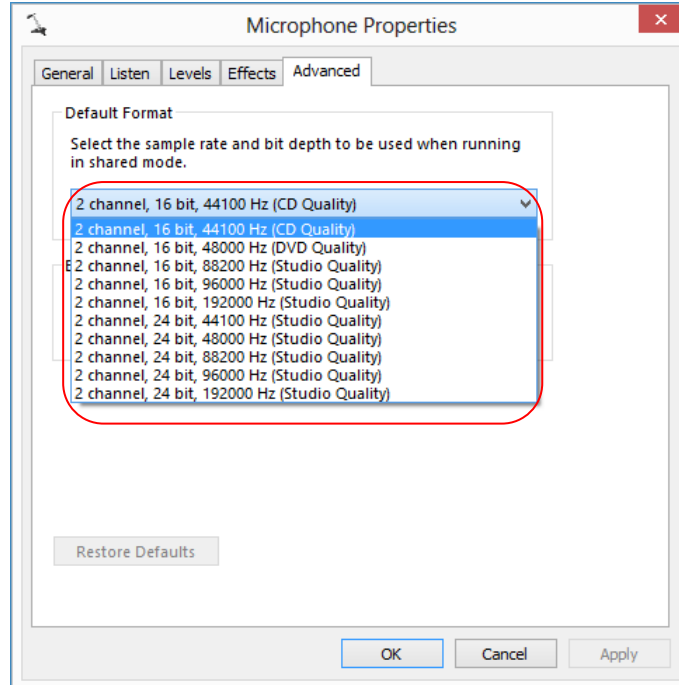
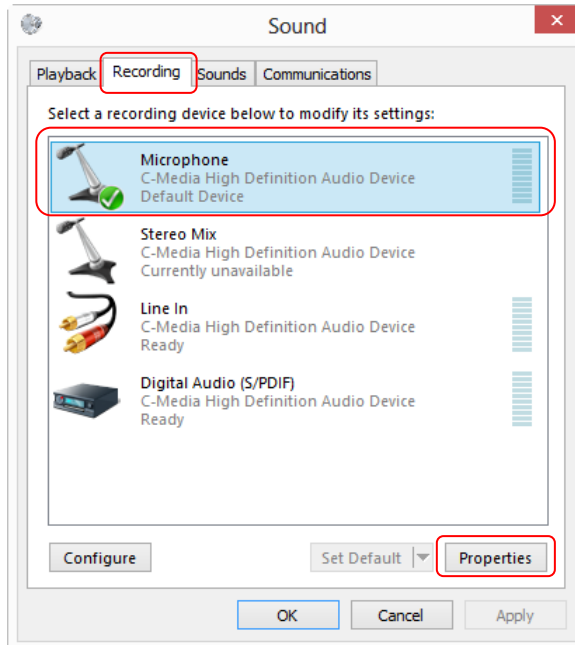
- I. Select the “Speakers” device and then click the “properties” button.



- II. Click the tag of “Advanced”, enter the advanced page, and click the dropdownlist to open default format support list as below diagram.

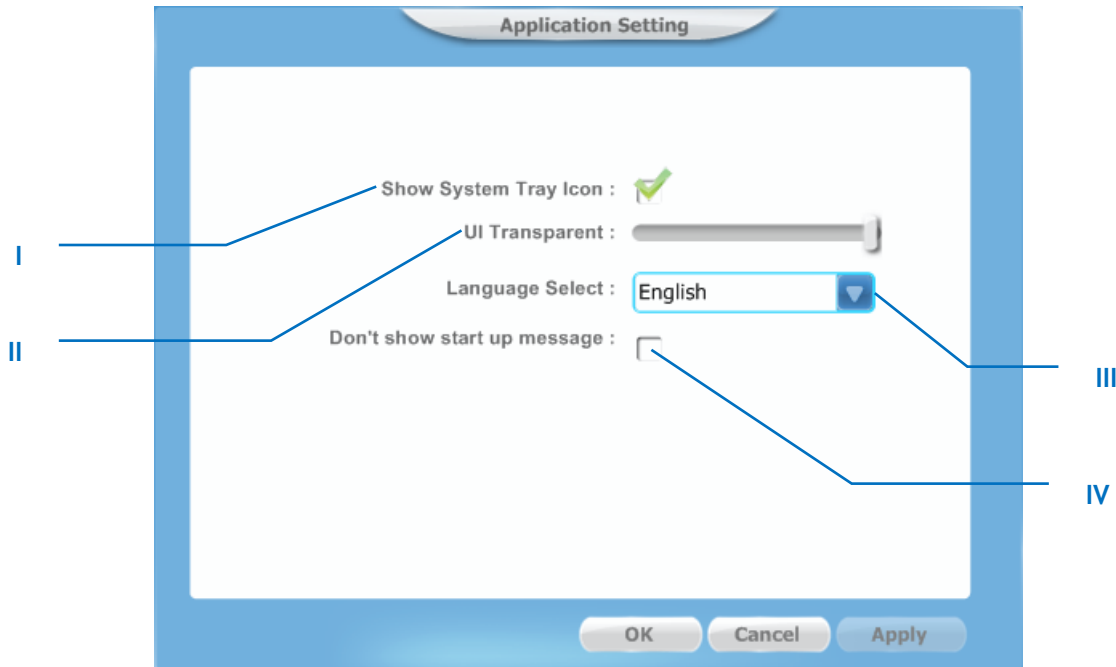


- III. Please follow the same step to change the sample rate & bit rate for “Microphone” device on recording tag.



6. Setting

Click setting item to open the “Xear Audio Center” setting page as below.



- I. Show System Tray Icon – Check “Show System Tray Icon” box, the Xear Audio center icon will show in the system tray.



- II. UI Transparent – It can adjust the UI vision of transparent
- III. Language Select – it can change the UI language. (Refer to [Appendix A](#))
- IV. Don't show start up message – it can open/close the UI start-up message.

7. Exit:

When click the “Exit” item, will exit the tray Icon from system tray.

Appendix A - Multi-Lingual Supporting List

C-Media USB/PCI/PCI-E Audio Driver Multi-Lingual Supporting List

- Support 17 languages.
- Detail information:
 - 1 English - English
 - 2 German - Deutsch
 - 3 French - Français
 - 4 Portuguese - Português
 - 5 Spanish - Español
 - 6 Russian - русский язык
 - 7 Italian - Italiano
 - 8 Dutch - Nederlands
 - 9 Indonesian - Bahasa Indonesia
 - 10 Danish - Dansk
 - 11 Chinese - Traditional
 - 12 Chinese - Simplified
 - 13 Korean - 한국어 (韓國語)
 - 14 Japanese-日本語
 - 15 Swedish - Svenska
 - 16 Turkish - Türkçe
 - 17 Thai- ไทย

Install program will install the corresponding language package base on the detected OS language.