

PCI Express Multi I/O Card

User Manual Ver. 1.00

All brand names and trademarks are properties of their respective owners

Features

1). PCI Express

- Fully compliant with PCI Express Base Specification, Revision 1.0a
- PCIe Multi Function Peripheral controller with x1 Lane Interface
- Support for D1, D2, D3hot and D3cold
- Utilizes 100-MHz Differential PCI Express Common Reference Clock
- Support PCIe Power Management

**Please note that some sections of the manual are only applicable for the products that have such functions.

2). Serial Port

- Four 16c450/550/Extended 550 compatible UARTs
- Supports RS232 modes
- Bi-directional speeds from 50 bps to 16Mbps/Port
- Full Serial modem Control
- Supports Hardware, Software flow control
- 5,6,7,8 and 9-bit Serial format support
- Even, Odd, None, Space & Mark parity supported
- Custom BAUD Rates supported with external clock or by programming internal PLL
- On Chip 256 Byte depth FIFOs in Transmit, Receive path of each Serial Port
- Supports remote wakeup and power management features
- Serial Port transceiver shutdown support
- Supports Slow IrDA on all Serial Ports

WARNING

Before installing and activating the controller card, please make sure you have a complete backup of your existing data from your hard drives. The manufacturer is not responsible for data loss due to abuse, misuse, or neglect. Should you have any installation problem, please contact your dealer for assistance.

Installing the PCI Express I/O card in your computer

1. Turn off your computer and all devices connected to it.
2. Remove the Computer's cover. (Refer to your computer user's manual for more details.)
3. Find an unused PCI Express's slot and remove the metal bracket. (Save the bracket screw for later use.)
4. Align the card horizontally with respect to the PCI slot and insert it into the slot.
5. Once you have properly positioned the PCI Express I/O card into the slot, secure the PCI Express I/O card with the bracket screw you saved.
6. Place the cover back onto the computer's case.

Applications

- Serial Attached Devices
- Serial Networking/Monitoring Equipment
- Data Acquisition System
- POS Terminal & Industrial PC
- Add-On I/O Cards -Serial /USB
- Embedded systems - For I/O expansion

Software Support

- DOS
- Windows98/98SE/ME
- Windows 32bit: 2000/XP/2003 Server/Vista/7 & Windows 64bit: XP/2003 Server/Vista/7
- Linux Kernel 2.6.11 & above
- MAC 10.4 & above

1). Driver Locations

All the drivers for the Following PCI Express cards are located in these directories of the Driver CD.

```

:\Moschip\MCS99xx\windows\Windows_XP\Win32      Win XP 32bit
:\Moschip\MCS99xx\windows\Windows_XP\Win64      Win XP 64bit
:\Moschip\MCS99xx\windows\Vista_Win2K\Win32      Win 2K/Vista 32bit
:\Moschip\MCS99xx\windows\Vista_Win2K\Win64      Win 2K/Vista 64bit
:\Moschip\MCS99xx\windows\Windows_7\Win32       Win 7 32bit
:\Moschip\MCS99xx\windows\Windows_7\Win64       Win 7 64bit
:\Moschip\MCS99xx\Linux                          Linux
:\Moschip\MCS99xx\Mac                            Mac

```

2). Installing DOS Driver

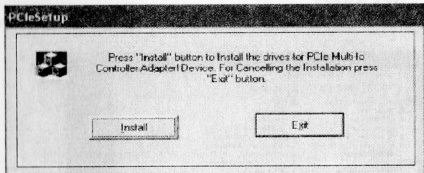
Copy "SXDOSIN.EXE" to your hard disk and run "SXDOSIN.EXE". For more options, read "SXDOSIN.EXE /?" located in the directory.

Installing Windows 2000 / XP / Server 2003 / Vista / 7 Driver

Installing drivers for the first time:

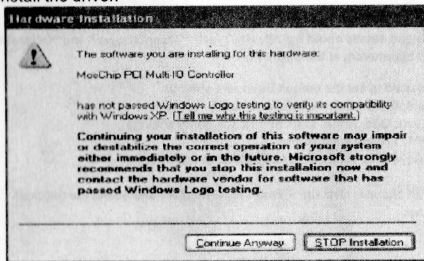
Make sure that you have not inserted PCIe card into PCIe slot.

Run "PCiesetup.exe" file from the driver disk folder. You will see a window as shown below:



When the "Hardware Installation" wizard prompts for Windows XP compatibility, Just click on "Continue Anyway".

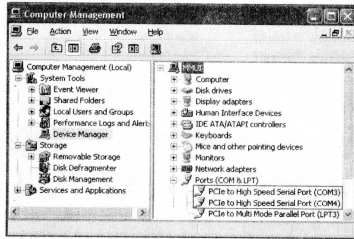
Select "Install" to install the driver.



Now shutdown the PC and insert the PCIexpress card into PCIe Slot and then turn it back ON. The Found New Hardware wizard will start, but select the “No, not this time” option. Now select the “Install the software automatically (Recommended)” option and click the Next button to continue. If the “Hardware Installation” wizard prompts for Windows XP compatibility, just click on “Continue Anyway”. Click on “Finish” to complete the MosChip MCS9922 Peripheral Port installation. Follow the same procedure mentioned above to install the remaining MCS9922 peripheral ports.

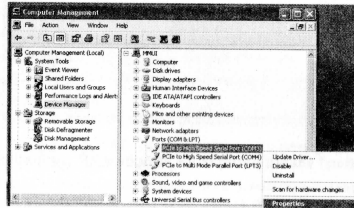
Verifying Driver Installation

Please check the required configuration from the Device Manager to confirm the proper installation. For Example proper detection of the MCS9922 PCIe Card (2 Serial) can be confirmed by viewing the Device Manager as shown below:



Serial Port Properties Sheet

In the Device Manager, Right Click on the required port, then click on the “Properties” Option to open the Properties page.



General TAB:

The “General” TAB provides you details about the “Device Type”, “Manufacturer” and “Device Status”. The “Port Settings” TAB is used to configure the parameters of the Serial Port.

Bits per Second: Selection is used to set the default Baud rate settings.

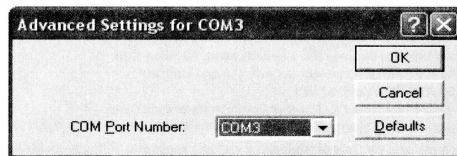
Data bits selection: Will have options 4,5,6,7 and 8 data bits.

Parity selection: Will have Even, Odd, None, Mark and Space parity settings.

Stop bits selection: Will have 1, 1.5 and 2 selections.

Flow Control selection: Will have Xon_Xoff, Hardware and None settings.

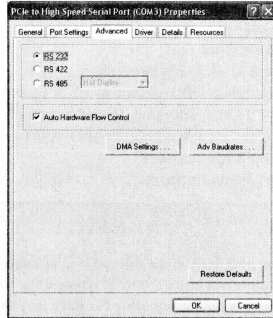
If you want to change the Port Number click on “Change Port Number” and select the required Port Number as shown below:



The Driver TAB shows the details of the Driver Provider, Driver Release Date, Driver version installed on your PC and Digital Signer details as shown above.

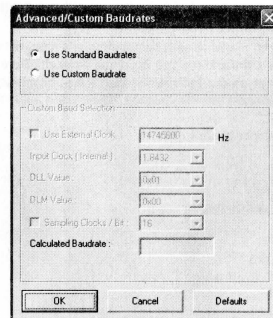
Serial Port Features and Mode Changes

By default every serial Port will be in RS 232 Mode.



Configuring Advanced Baud rates:

To Configure Advanced Baud rates click on the "Adv Baudrates" button.

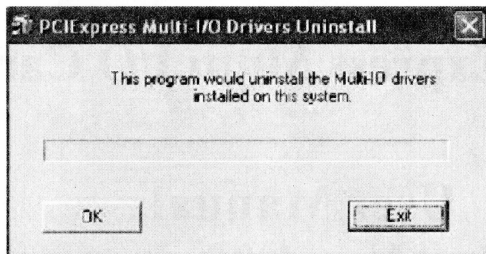


By default, the "Use Standard Baudrates" option will be enabled.
To configure custom Baud rate select "Use Custom Baudrate".

****Note:** When "Use Custom Baudrate" is selected, Serial Port baudrate is independent of the value set in the Application

Uninstalling Drivers

To Uninstall the MCS9922 drivers, run "MOSCHIP_PCIeUninst.exe" file available in the driver disk.



Note: Make sure that you have uninstalled any previous driver before installing updated drivers.

Visit www.sybausa.com today for complete information about all our products and to access downloadable drivers and manuals.