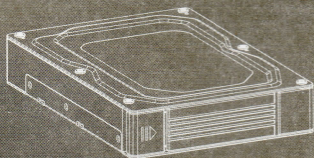


# SY-MRA25036

Dual 2.5" to 3.5" SATA HDD Converter



SY-MRA25036

MANUAL



SY-MRA25036 is an ideal storage allows 2x2.5"SATA/SSD HDD fit in a 3.5" HDD case. With built-in JBOD/RAID 1/RAID 0/NOR mode, providing HDD turbo, back-up and capacity expanding function.

## Features:

- Feeling the high-end and great heat dissipation with the aluminum and magnesium alloy case.
- Patent NSS connector supports 50,000 cycles hot-swap, giving HDD a safe and durable environment.
- Wingsonic's unique screw-less and tool-less design, swap and manage your data in a second.
- Built-in optional Raid modes, provide high write/read speed, data back-up and capacity expanding.
- Fits international standard 3.5" HDD spec, can be assembled into cases, enclosures and external storages with the standard screw holes.
- Perfect storage equipment for professional DIY users and IT workers.

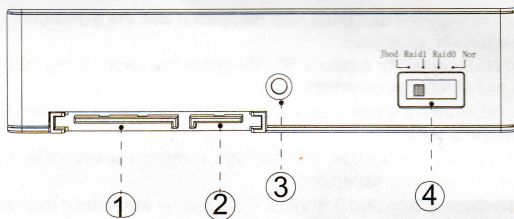
## Specifications:

- Interface: SATA
- Material: Aluminium+SPCC+ABS
- Color: Silver (Top cover), Black (body)
- RAID: JBOD, RAID1, RAID0, NOR
- LED: Power-Red, HDD access-Red flash
- Apply to HDD: 9.5mm SATA HDD/SSD
- Transfer Speed: 6.0Gb/s
- Application: All 3.5" HDD slot position
- Net Weight: 252g
- Dimensions: 146.4(L)×101.5(W)×26.5(H)mm
- O.S: Windows 2000/XP/Vista/7, Mac OS and Linux
- Operating Temperature: 0°C-55°C

## Package content:

SY-MRA25036	*1
Manual	*1
Screws	*4

## Rear panel:



1.SATA Power Port

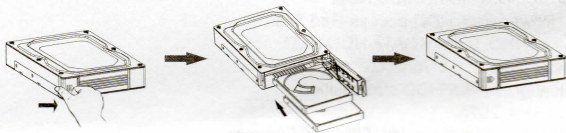
3.LED Indicator

2.SATA Data Port

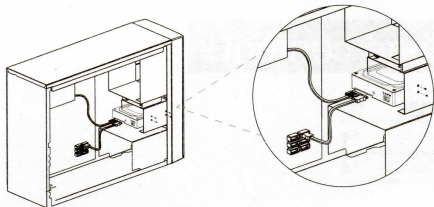
4.RAID setting switch

## Basic use:

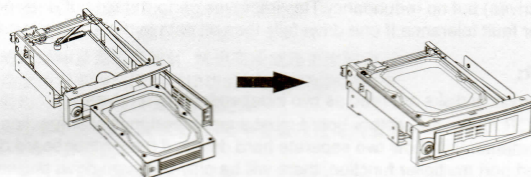
- 1.Hold down the front button, then open the front door, put the 2.5" HDD into the SY-MRA25036.



- 2.Put SY-MRA25036 into 3.5"HDD slot position, Fix two screws on each side, four screws in total.



SY-MRA25036 could be applied to any of SYBA 3.5"



## RAID description:

**1.JBOD(LARGE):**

Meaning "Just a Bunch Of Drives", all disks being independently addressed, with no collective properties—each physical disk, with all the logical partitions each may contain, being mapped to a different logical volume: just a bunch of disks. All the physical disks are concatenated and presented as a single disk.

**2.RAID 1:**

Data is written identically to multiple drives, thereby producing a "mirrored set"; at least 2 drives are required to constitute such an array. All of the data on one drive will be recoverable from the another.

### **3.RAID 0:**

Provides data striping(spreading out blocks of each file across multiple disk drives) but no redundancy.This improves performance but does not deliver fault tolerance.If one drive fails then all data in the array is lost.

### **4.NOR:**

Two physical disks are read as two independent hard drives.

For NOR mode, the mother board must support port multiplier function, then the computer will show two separate hard drives, if the mother board don't support port multiplier function, there will be only one hard drive shown and available for use.

## **Hardware setting method:**

- 1.Please power off the product.
- 2.Switching RAID mode to NOR mode
- 3.Power on the product again. After the LED indicator remains on, then power off it.
- 4.Switching the mode to RAID as you wish, power on the product and complete the setting.

Note:

If switch between different mode, please switch back to NOR mode first. Then follow the hardware setting step 2 to operate it.

## **NOTE**

Syba will not be liable for any software, hardware, or data stored within or interfacing with Syba products which results in damage or malfunction. Syba will only be responsible for repairs and services of Syba products. For further questions or concerns about Syba products, please visit us at [www.sybausa.com](http://www.sybausa.com)