

# **2-Port USB/HDMI Cable KVM Switch**

## **User's Manual**

## *Index*

1. INTRODUCTION.....	3
1.1. FEATURES.....	3
1.2. PHYSICAL DIAGRAM.....	4
1.3. PACKAGE CONTENTS.....	4
2. SPECIFICATIONS.....	5
3. INSTALLING THE USB/HDMI CABLE KVM SWITCH.....	6
3.1. SYSTEM REQUIREMENTS.....	6
3.2. HARDWARE INSTALLATION.....	6
3.3. HOT SWAPPABLE.....	6
3.4. DRIVER INSTALLATION (WINDOWS 98/SE ONLY).....	6
4. OPERATION.....	9
4.1. PUSH BUTTON OPERATION.....	9
4.1.1. PC SELECTION.....	9
4.1.2. AUTO-SCAN.....	9
4.2. HOT KEY OPERATION.....	10
4.2.1. PC SELECTION.....	10

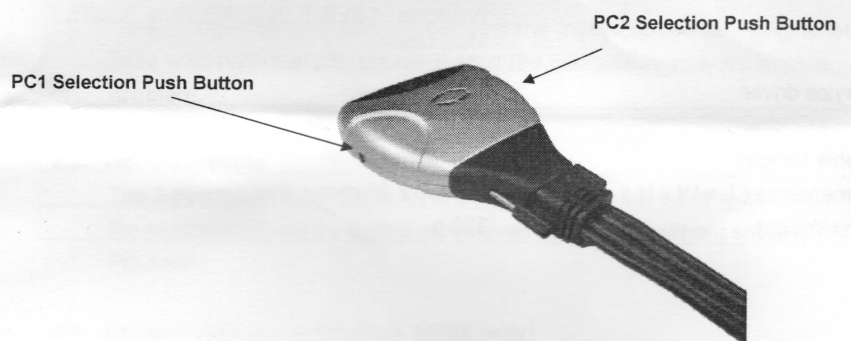
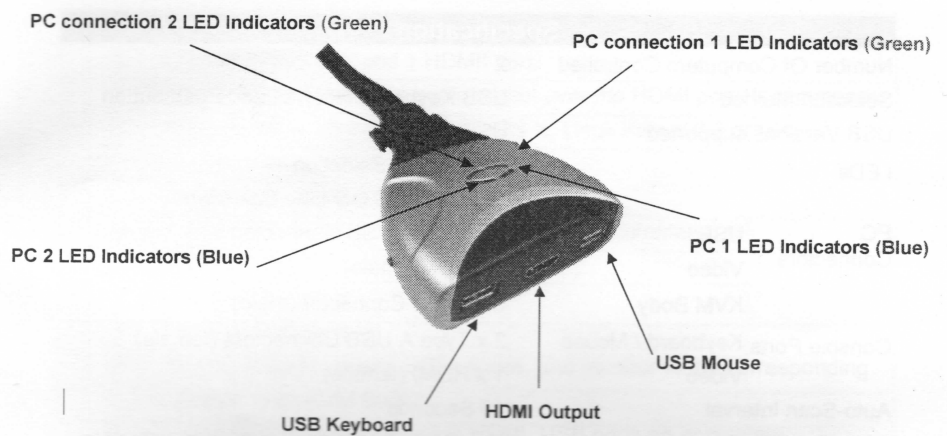
## **1. Introduction**

Thank you for purchasing **2-port USB/HDMI Cable KVM Switch** that employs HDMI display technology for use with high definition digital monitors and HDTVs. With integrated digital audio, the KVM Switches also allow users to experience high-definition sound. You now have a high quality, durable system that enables you to control two computers from one console (USB Mouse, Keyboard, and Monitor).

### **1.1. Features**

1. Controls 2 computers from a single console (Keyboard/Mouse) over USB connection.
2. Support Window 98SE/ME/2000/XP/Vista/7/2003, Mac , Linux
3. Compliant with HDMI 1.3a,
4. HDCP compliant.
5. Supports HD audio.
6. Supports hot-swap. All devices connected to the KVM can be added or removed at any time, without shutting the unit down.
7. Supports USB keyboard Hot-Key Switch (for Microsoft Windows series) and push buttons for easy operation.
8. Supports Auto-Scan function to alternate video between both computers.
9. Supports LED display for PC and audio status monitoring.
10. Supports max resolution : 1920x1200@60Hz
11. Supports Plug and Play.
12. Self powered through USB connection.

## 1.2. Physical Diagram



- **Active PC LED Indicators:**  
BLUE LED indicates that the 2-port USB/HDMI Cable KVM Switch is switched to the corresponding PC.
- **PC Connection LED Indicators:**  
GREEN LED indicates the status of PC connection..

## 1.3. Package Contents

1. One 2-port USB/HDMI Cable KVM Switch.
2. User's manual.

## 2. Specifications

Specification		
Number Of Computers Controlled	2	
Selection Method	USB Keyboard Hot Key and Push button	
USB Versions supported	USB 1.1 / 2.0	
LEDs	Blue for PC Selection Green for PC ON-Line Selection	
PC Connectors	USB	2 x Type A USB Connectors
	Video	2 x HDMI (male)
	KVM Body	3 x Video Connector (male)
Console Ports	Keyboard / Mouse	2 x Type A USB Connectors (female)
	Video	1 x HDMI (female)
Auto-Scan Interval	10 Seconds	
DDC2B monitor	Yes (Max. Resolution: 1920x1200)@60Hz	
Hot Swappable	Yes	
Operating systems supported	Windows 98SE/ME/2000/XP/Vista/7/2003, Mac, Linux	
Device driver	No	
Power	By PC USB power	
Cable Length	1.20 Meter	
Dimensions ( L x W x H )	65 x 85 x 25 mm	
Unit Weight	330 g	

### **3. Installing the USB/HDMI Cable KVM Switch**

#### **3.1. System Requirements**

1. A PC with USB port and 1 HDMI port.
2. Graphic card support the audio output over the HDMI port(Recommend).
3. Windows 98 or later, Mac OS 8/9/OS X, Linux Kernel 2.3 or later.
4. USB Keyboard and mouse.
5. Monitor with HDMI port
6. Monitor has speakers or audio output port(Recommend).

#### **3.2. Hardware Installation**

1. Turn off computers.
2. Plug the USB keyboard, USB mouse, and monitor to the corresponding connectors on KVM Switch.
3. Connect KVM switch cables to HDMI, USB ports on computers.
4. Turn on computers

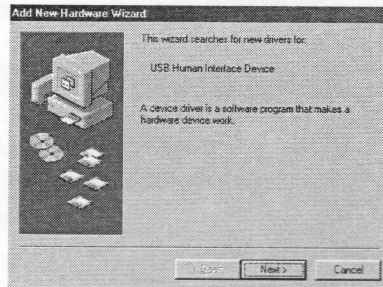
**Note:** If the monitor can not support the maximum resolution it should have with KVM switch, please restart the computers to work out the problem.

#### **3.3. Hot Swappable**

The 2-port USB/HDMI Cable KVM Switch supports hot-swap technology. All the components can be added or removed at any time without shutting the PC down.

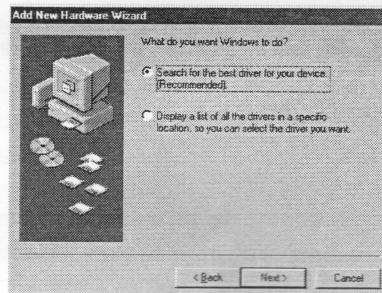
#### **3.4. Driver Installation (Windows 98/SE only)**

After you connect the **2-port USB/HDMI Cable KVM Switch** to your PC, Win 98 will automatically detect the device and prompt for the driver installation. Please install the **2-port USB Cable KVM Switch** by the following instruction from **Step A-G**. Please have your Windows 98 CD ready.



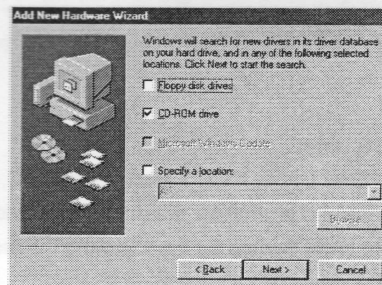
A. Press "Next" to Continue.  
(Ref. Fig. A)

Fig. A



B. Select "Search for the best driver for your device" and press "Next" to continue.  
(Ref. Fig. B).

Fig. B



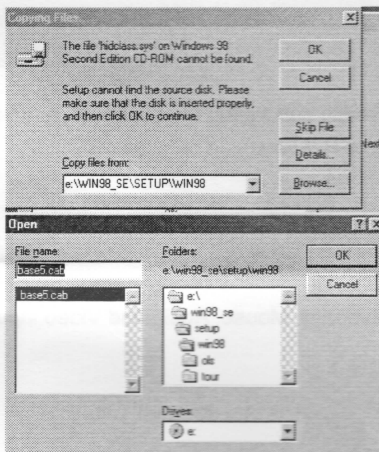
C. Please insert the "Windows 98" CD into your CD-ROM drive. Click "CD-Rom drive" and press "Next" to continue.  
(Ref. Fig. C)

Fig. C



D. Press "Next" to start the installation process.  
(Ref. Fig. D)

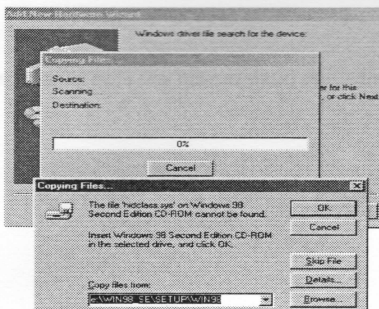
Fig. D



E. Sometimes Windows cannot locate the necessary driver automatically. So you need to choose "Browse" to specify the location of the driver on your "Windows 98" CD manually.  
(Ref. Fig. E)

Fig. E

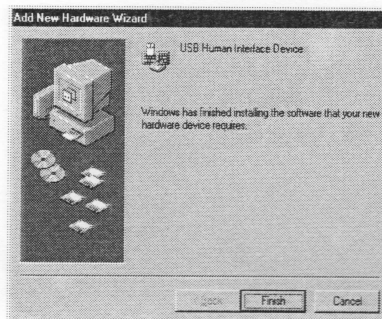
\* The driver might be located in a different directory from the figure above.



F. Press "OK" to continue  
(Ref. Fig. F)

Fig. F





G. Press "Finish" and Windows has finished installing the USB Human Interface Device driver for PS/2 keyboard & mouse. (Ref. Fig. G)

Fig. G

## 4. Operation

The 2-port USB/HDMI Cable KVM Switch can switch the keyboard, mouse audio and video by pushing button and Hot Key.

### 4.1. Push Button Operation

#### 4.1.1. PC Selection

User can switch Computers (Keyboard, Mouse, Audio and Video inputs) by pressing push button directly.

#### 4.1.2. Auto-Scan

- **Start Auto-Scan**

Press and hold push button for longer than 3 seconds will turn the system into auto-scan mode. The auto-scan time interval is fixed to 10 seconds.

- **Stop Auto-Scan**

Under auto-scan mode, press any push button will stop auto-scan.

## 4.2. Hot Key Operation

When using the Hot Key sequences, the keys must be pressed within 6 seconds, otherwise the Hot Key action will terminate.

The Hot Key Operation is only supported under Microsoft Windows series system.

### 4.2.1. PC Selection

**[ScrollLock] + [ScrollLock]** → change the active PC port.

Hot Key	Action
[ScrollLock] + [ScrollLock]	Switch active PC connection to the next PC

### **Disclaimer**

Information in this document is subject to change without notice. The manufacturer does not make any representations or warranties (implied or otherwise) regarding the accuracy and completeness of this document and shall in no event be liable for any loss of profit or any other commercial damage, including but not limited to special, incidental, consequential, or other damages.

No part of this document may be reproduced or transmitted in any form by any means, electronic or mechanical, including photocopying, recording or information recording and retrieval systems without the express written permission of the manufacturer.

All brand names and product names used in this document are trademarks, or registered trademarks of their respective holders.

### **FCC Statement**

This device generates and uses radio frequency and may cause interference to radio and television reception if not installed and used properly. This has been tested and found to comply with the limits of a Class B computing device in accordance with the specifications in Part 15 of the FCC Rules. These specifications are designed to provide reasonable protection against such interference in a residential installation. However, there is no guarantee that interference will not occur in a particular installation. If this device does cause harmful interference to radio or television reception, which can be determined by plugging the device in and out, the user can try to correct the interference by one or more of the following measures:

- Reorient or relocate the receiving antenna.
- Increase the separation between the device and receiver.
- Connect the computer into an outlet on a circuit different from that to which the receiver is connected.
- Consult the dealer or an experienced radio/TV technician for help.

