

USB 2.0 to Serial Converter

User Manual Ver. 1.00

The IO-USB2310 is a USB to serial UART interface with full modem control and the following advanced

Features

- Standards: conforming to USBV1.0, 1.1 and 2.0
- USB signals: VCC, DATA+, DATA-, GND and FG
- RS-232 signals: CD RXD TXD DTR GND DSR RTS CTS RI
- Single chip USB to asynchronous serial data transfer interface
- Support Bits per second Data transfer rates from 300 baud to 961200baud (RS232) at TTL levels
- UART interface support for 7 or 8 data bits, 1 or 2 stop bits and even/odd/mark/space/none
- Flow control none, hardware and xon/xoff
- Synchronous and asynchronous bit bang interface options with RD# and WR# strobes
- UART signal inversion option
- USB 2.0 Full Speed capable
- Signal indication: indicator lights for Power (PWR), Send (TXD) and Receive (RXD)
- Extended operating temperature range; -40 to 85°C

Applications

- USB to UART Cable
- POS Printer Terminal
- Networking System
- Industrial and Power Meter
- USB Bar Code Reader
- USB Digital Camera Interface
- USB Wireless/Wired Modem

Connector and signal

DB9 Female		
PIN	Name	Signal
1	CD	Carrier Detect
2	RXD	Receive
3	TXD	Transmit
4	DTR	Data Terminal Ready
5	GND	Ground
6	DSR	Data Set Ready
7	RTS	Request To Send
8	CTS	Cear to Send
9	RI	Ring Indicator

USB 2.0	
PIN	Signal
1	VCC
2	DATA-
3	DATA+
4	GND
5	FG

Driver Description and Setup

Driver Description

- Windows XP, Vista, 7, 8 32,64-bit
- Windows Server 2K3, 2K8, 2K12 32,64-bit
- Windows XP Embedded
- Windows CE 4.2, 5.0 and 6.0
- Mac OS-X
- Linux 3.2 and greater
- Android

Following are steps involved in installing the drive

- Connect the device to a spare USB port on your PC. the screen shown in Figure 1 is displayed. Select "No, not this time" from the options available and then click "Next" to proceed with the installation.



Figure 1

- Select "Install from a list or specific location (Advanced)" as shown in Figure 2 below and then click "Next".

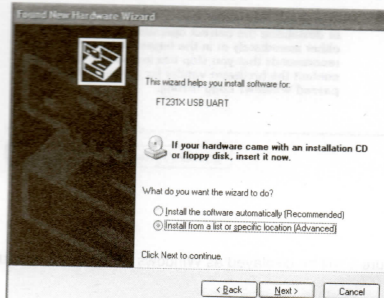


Figure 2

3. Select "Search for the best driver in these locations" and enter the file path in the combo-box ("E:\FTDI\Windows" in Figure 3 below) or browse to it by clicking the browse button. Once the file path has been entered in the box, click next to proceed.

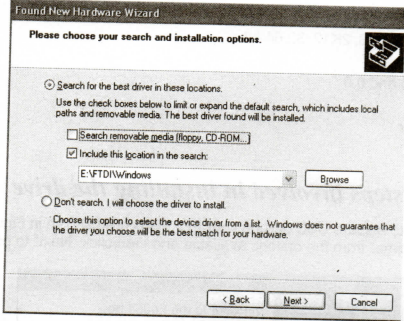


Figure 3

4. If Windows XP is configured to warn when unsigned (non-WHQL certified) drivers are about to be installed, the message dialogue shown in Figure 4 will be displayed unless installing a Microsoft WHQL certified driver. Click on "Continue Anyway" to continue with the installation. If Windows XP is configured to ignore file signature warnings, no message will appear

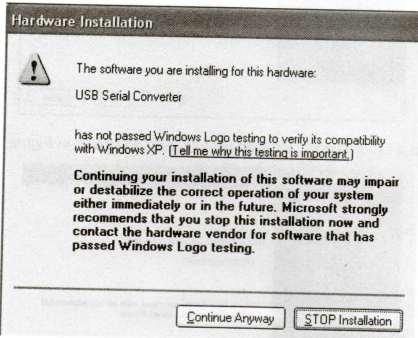


Figure 4

5. The screen shown in Figure 5 will be displayed as Windows XP copies the required driver files

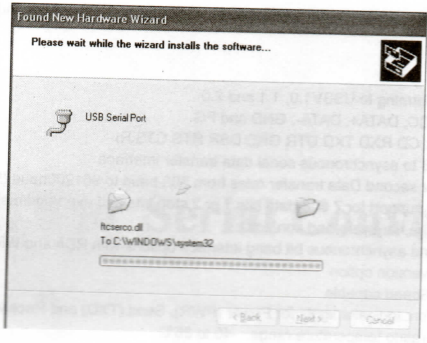


Figure 5

6. Windows should then display a message indicating that the installation was successful (Figure 6). Click "Finish" to complete the installation for the first port of the device



Figure 6

If the device is based on the FT231X, the Found New Hardware Wizard will continue by installing the USB Serial Converter driver for the second port of the FT231X device. The procedure for installing the second port is identical to that for installing the first port from the first screen of the Found New Hardware Wizard. This is done automatically if the driver is Microsoft WHQL certified. If the device is not based on the FT231, the COM port emulation driver is loaded as indicated in the following steps Follow steps 2 to 6 again.

7. Now the FT231XS USB to UART is ready for use.

Port Settings Configuration

The IO-USB2310 supports configurable baud rates, Data bits, Parity, Stop bits, Flow control. (Figure 7, Figure 8)

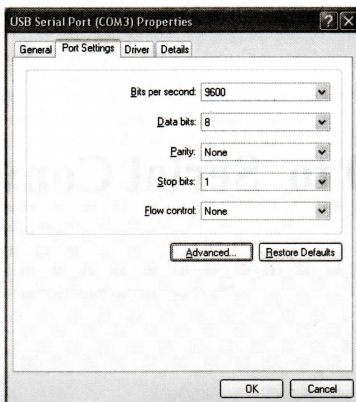


Figure 7

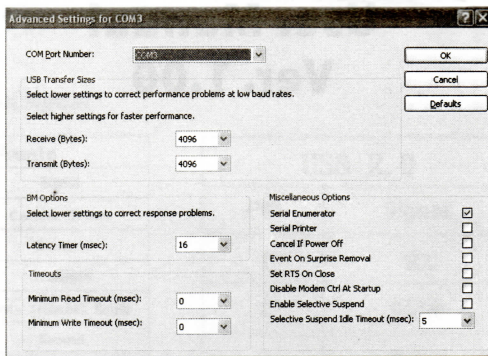


Figure 8