

Features

1). PCI Express

- Fully compliant with PCI Express Base Specification, Revision 1.0a
- PCIe Multi Function Peripheral controller with x1 Lane Interface
- Support for D1, D2, D3hot and D3cold
- Utilizes 100-MHz Differential PCI Express Common Reference Clock
- Support PCIe Power Management
- * Please note some sections of the manual are only applicable for the production that have such functions.

2). Serial Port

- Four 16c450/550/Extended 550 compatible UARTs
- Supports RS232 modes
- Bi-directional speeds from 50 bps to 16Mbps/Port
- Full Serial modem Control
- Supports Hardware, Software flow control
- 5,6,7,8 and 9-bit Serial format support
- Support MODEM modem signals CTS, DSR, RI, DCD, the DTR, RTS, convert RS232 level
- Even,Odd,None,space & Mark parity supported
- Custom BAUD Rates supported with external clock or by programming internal PLL
- On Chip 256 Byte depth FIFOs in Transmit, Receive path of each Serial Port
- Supports remote wakeup and power management features
- Serial Port transceiver shutdown support
- Support Slow IrDA on all Serial Ports

3). IEEE1284 Parallel Port

- Multi-mode IEEE1284 compliant controller(SPP, Nibble, Byte, PS/2, EPP, ECP)
- Faster data rates up to 1.5Mbps for parallel port

Installing the PCI Express I/O card to your computer

- 1). Turn off your computer and all devices connected to it.
- 2). Remove the Computer's cover, Refer to your computer user's manual for more details.
- 3). Find an unused PCI Express slot and remove the metal bracket. Save the bracket screw for later use.
- 4). Align the card horizontally with respect to the PCI slot and insert it into the slot. Once you have properly positioned the PCI Express I/O card into the slot. secure the PCI Express I/O card with the bracket screw you have saved.
- 5). Replace the computer's cover.

Applications

- Serial Attached Devices
- Serial Networking/Monitoring Equipment
- Data Acquisition System
- POS Terminal & Industrial PC
- Parallel/Printer Port based applications
- Add-On I/O Cards -Serial/Parallel/USB
- Embedded systems - For I/O expansion

Package

1. PCI-e I/O card
2. Driver CD
3. User manual
4. Bracket with COM ports (subject to different models)

Software Support

- Windows98/98SE/ME
- Windows 7/Vista/XP/Server 2003/Server 2000(32bit only)/ME/98SE
- Linux Kernel 2.4 & 2.6
- Mac 10.4 & above

1). Driver Locations

All the drivers for the Following PCI Express cards are located in these directories of the Driver CD.

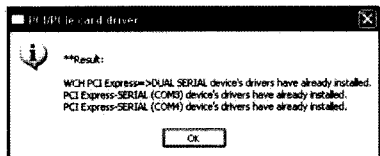
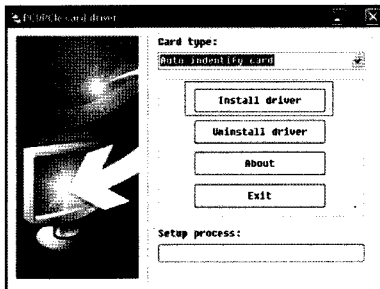
:\\WCH\\CH38X\\DVR_1P	1P
:\\WCH\\CH38X\\DVR_2S	2S
:\\WCH\\CH38X\\DVR_2S1P	2S1P
:\\WCH\\CH38X\\DVR_4S	4S
:\\WCH\\CH38X\\DVR_8S	8S
:\\WCH\\CH38X\\SETUPX64	
:\\WCH\\CH38X\\PCISSETUP	all Modes

Installing Windows2000/XP/2003Server/Vista/7 Driver

Installing drivers for the first time:

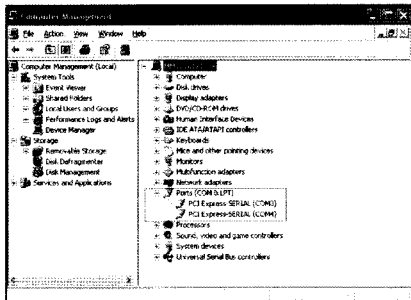
Make sure that you have inserted PCIe card into PCIe slot.

Run "PCISSETUP.exe" file from the driver disk folder. You will see a window as shown below:



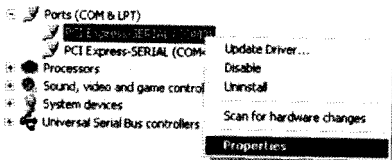
Verifying Driver Installation

Please check the required configuration from Device Manager to confirm the proper installation. For Example proper detection of the WCH382 PCIe Card (2 Serial) can be confirmed by viewing the Device manager as shown below:



Serial Port Properties Sheet

In the Device Manager Right Click on required Port and click on "Properties" Option to open the Properties page.



General TAB :

The "General" TAB provides you details about "Device Type", "Manufacturer" and "Device Status". The "Port Settings" TAB is used to configure parameters of the Serial Port.

Bits per Second selection is used to set the default Baud rate settings.

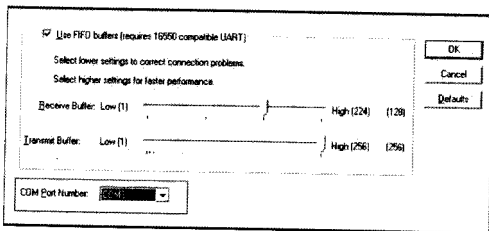
Data bits selection will have options 4, 5, 6, 7 and 8 data bits.

Parity selection will have Even, Odd, None, Mark and Space parity settings.

Stop bits selection will have 1, 1.5 and 2 selections.

Flow Control selection will have Xon_Xoff, Hardware and None settings.

If you want to change the Port Number click on "Change Port Number" and select the required Port Number as shown below:

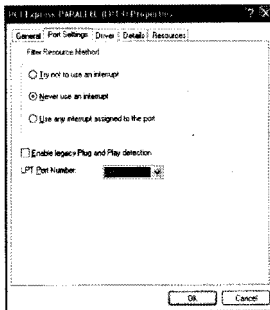


The Driver TAB shows the details of Driver Provider, Driver Release Date, Driver version is installed on your PC and Digital Signer details as shown above.

Parallel Port Features

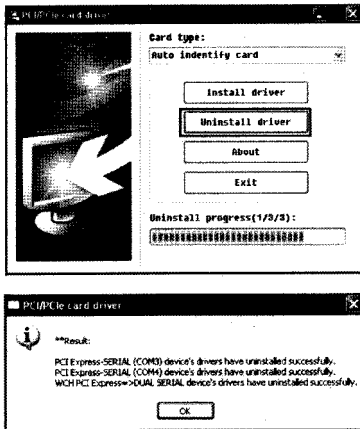
Parallel Port Features:

Parallel port will support SPP/CBFIFO/ECP/EPP modes.. In this mode, Parallel port mode will be automatically configured to the required mode after handshaking with the connected device.



Uninstalling Drivers

To Uninstall WCH drivers, run "CH38X_PCISETUP.exe" file available in the driver disk.



note: Make sure that you should uninstall any previous driver before installing updated drivers.