

INTRODUCTION

This Multi-Channel PCI-Express Sound Card is a versatile PCI-Express 24bit multi-channel audio controller that brings your computer at par with the fidelity of state-of-the-art home audio electronics. It provides surround sound output and crystal-clear audio quality for playback and recording. Some of the typical applications for this part are computer based high fidelity multi-channel audio, home theater and entertainment, cost effective multi-track audio, PC-based data acquisition, waveform generation.

FEATURES AND SPECIFICATION

- Based on CMedia CM8828 multi-channel audio processor
- Based on CMedia CM9882A 8-Channel HDA Codec
- Complies with PCI-Express Base Specification Rev. 1.1
- Sampling rate up to 24-bit and 192 KHz for both playing back and recording
- 8-channel analog outputs
- 2-channel analog input x 1
- 2-channel microphone input x 1
- S/PDIF & Coaxial combo input x 1
- S/PDIF & Coaxial combo output x 1
- Supports swapping of Center and LFE audio output channel
- Integrated de-pop function for eliminating pop noise during PC power-up and shutdown
- Supported Operating systems : Windows 8 32/64-bit, Windows 7 32/64-bit, Windows Vista 32/64-bit, and Windows XP 32/64-bit
- Supports ASIO and WASAPI
- Supports Standard Profile or Low Profile chassis

PACKAGE CONTENTS

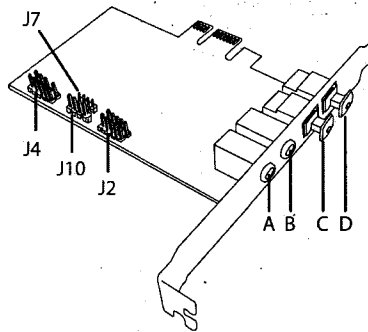
Please check whether the package contains the following items:

- Multi-Channel PCI-Express Sound Card – Main card x 1
- Multi-Channel PCI-Express Sound Card – Daughter card x 1
- 10-pin flat cable x 1
- User's Manual x 1
- Driver / application CD x 1

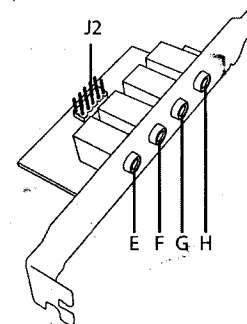
If any item is missing or damaged, please contact the retailer as soon as possible.

1

Main Card



Daughter Card



- A. Analog Left / Right Line in
 - B. Analog Left / Right microphone input
 - C. S/PDIF input: Connect to S/PDIF optical audio device
 - D. S/PDIF output: Connect to digital amplifier or decoder
 - E. Front Left / Right analog output
 - F. Side Surround Left / Right analog output
 - G. Center / Subwoofer analog output
 - H. Rear Surround Left / Right analog output
 - J2. Two 10-pin headers for connecting between main card and daughter card (*)
 - J4. 9-pin header for connecting Intel HD front panel audio
 - J10. Analog CD-IN Port (Signal: L-G-G-R)
 - J7. Analog CD-IN Port (Signal: G-R-G-L)
- (*) The red color coded line on the cable should connect to pin number 1 which is represented by a triangle silkscreen next to the header

HARDWARE INSTALLATION

1. Turn off your computer and all external devices connected to it.
2. Disconnect your computer from the power sources.
3. Open the computer case. Refer to your computer user manual for more details.
4. Locate an available PCI-Express slot and remove the slot bracket. Save the bracket screw for later use.
5. Align the controller card horizontally with respect to the PCI-Express slot and insert it into the slot firmly and evenly.

2

6. Once you have properly positioned the card into the slot, fasten it to the computer case with the bracket screw you have saved.
7. Secure the computer case.
8. Connect your speakers, audio source, or microphone to the Multi-Channel PCI-Express Sound Card using audio cables with 3.5mm plug (not included in the package). If you use a pair of stereo speakers (2 channels) or a stereo headphone, please connect it to the "Front-Out" socket.
9. If the Intel HD front panel audio is connected, you can switch the audio output through the front panel.
10. Switch on your computer.

APPLICATION SOFTWARE AND DRIVER INSTALLATION

Installing driver and Xear Audio Center for all supported Windows OS

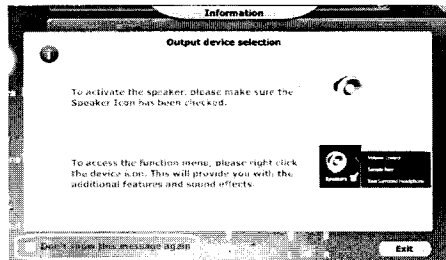
1. Insert the driver CD into the optical drive,
2. Go to the driver CD folder D:\CMedia\CM8828, then double click "Setup.exe" (Assuming the optical drive is at D:)
3. The InstallShield Wizard software will guide you the steps till the installation is completed.
4. You may be required to reboot the system after the software installation.
5. The Xear Audio Center icon will show up on the Windows task bar. This means the sound card has been setup properly.
6. To access the Xear Audio Center functions, click on the icon on the Windows task bar.



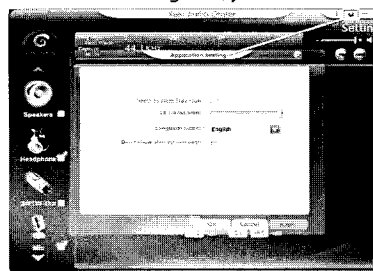
INTRODUCTION OF XEAR AUDIO CENTER SOFTWARE

1. Click on Xear Audio Center icon on the Windows task bar, you will read the information showed below. Read it carefully, it shows you some important message about this software. If you don't want to read it next time, check the box 'Don't show this message again'.

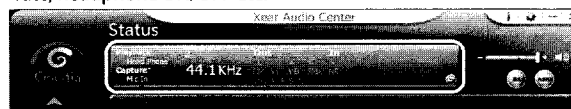
3



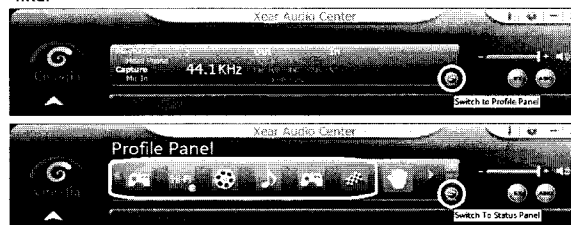
2. Click on the setting icon, you will see the application setting showed below:



3. Status panel to show you the sound card status like audio I/O channel, sample rate, headphone ON/OFF etc.



4. Status panel can be switched to profile panel. There are six modes of profile, they are FPS, HiFi, Movie, Music, RTS and Racing mode. You can select any of those you like.

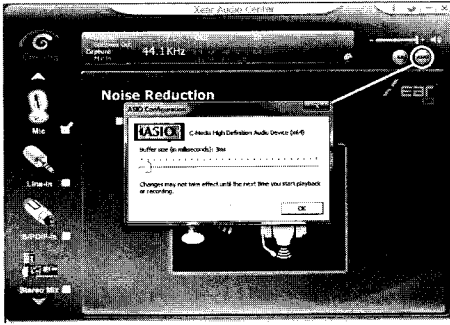


4

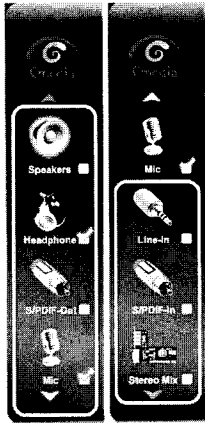
5. EX icon to enable / disable Xear 3D EX.



6. ASIO icon to change buffer size. It will take effect when you start playback or recording next time.



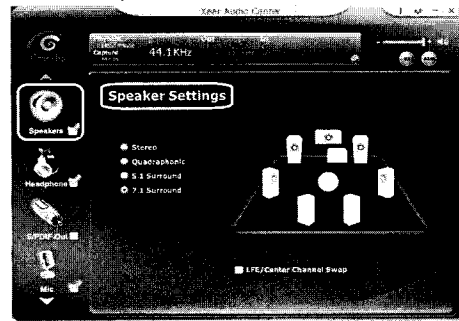
7. There are seven kinds of audio I/O selection on the left most bar, they are Speakers, Headphone, S/PDIF-Out, Mic, Line-In, S/PDIF-In and Stereo Mix. Headphone box will appear when Intel HDA front panel is connected, otherwise it will not show.



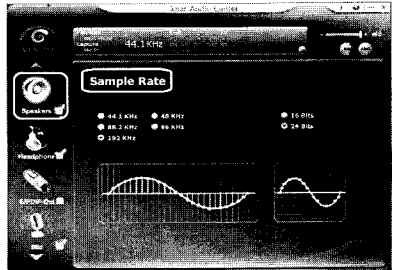
8. Right click the audio I/O icon, you will get additional features and sound effects showed below:



9. Right click Speakers icon and select Speaker Settings, there are four kinds of channel option, they are Stereo, Quadraphonic, 5.1 Surround and 7.1 Surround. You can swap LFE/Center Channel on this interface.



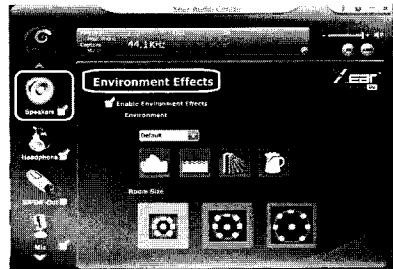
10. Right click Speakers icon and select Sample Rate, you will see the interface showed below:



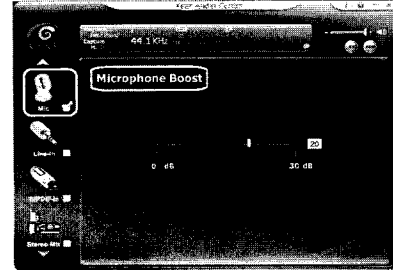
11. Right click Speakers icon and select Equalizer, check the box to enable it, you will see the interface showed below:



12. Right click Speakers icon and select Environment Effects, check the box to enable it, there are many kinds of environments, such as Concert Hall, Under Water, Bathroom and Psychotic. And there are three kinds of room size, they are Small Room, Medium Room and Large Room.



13. Right click Mic icon and select Microphone Boost, you can adjust the boost value.



14. You can get more features and sound effects from this software, enjoy yourself!

GETTING THE LATEST DRIVER, SOFTWARE & DOCUMENT
To get the latest driver, software and document, please visit the following website:

<http://www.drivers-download.com>

In "Drivers Search" section, please enter the Download code (DL code): DL-0327101 to search for the latest driver, software and document.